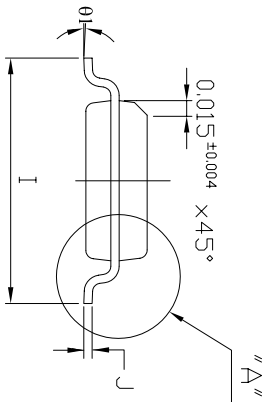
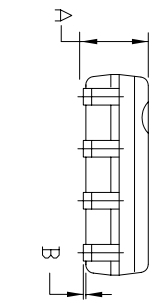
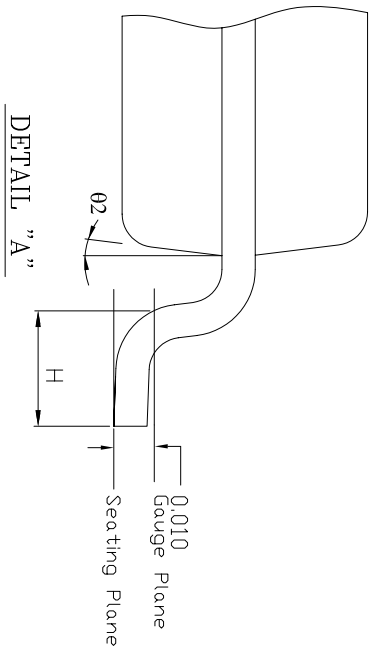
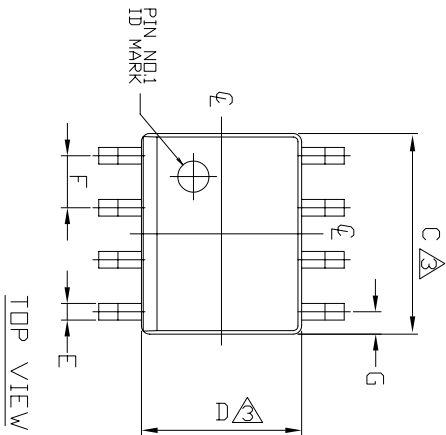


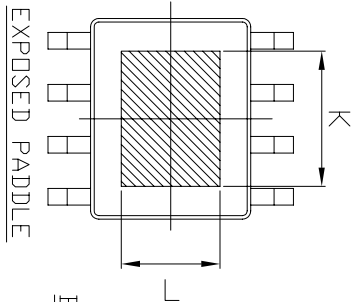
REVISIONS

REV	CHANGES	DATE	By	Appr
B	Dim. K from .115 to .130 +/- .005 Dim. L from .079 to .095 +/- .005	9/23/2011	DT	KST
C	Dim. K from .130+/--.005 to .135+/--.010 Dim. L from .095+/--.005 to .095+/--.010	9/29/2011	DT	KST



SYMBOL	8 SDIC	
	MIN	MAX
A	0.054	0.068
B	0.001	0.004
C	0.189	0.196
D	0.150	0.157
E	0.014	0.019
F	0.050	BSC
G	0.0215	REF
H	0.020	0.040
I	0.229	0.244
J	0.0075	0.0098
K	0.125	0.145
L	0.085	0.105
01	0°	8°
02	7°	BSC

- NOTE :
1. TOP PACKAGE SURFACE TO BE MATTE FINISH VDI 24-27.
 2. BOTTOM PACKAGE SURFACE TO BE MATTE FINISH VDI 8-11.
 3. DIMENSION ARE EXCLUSIVE MOLD FLASH AND GATE BURR.
 4. FOOT LENGTH MEASURING IS BASED ON THE GAUGE PLANE METHOD.



EXPOSED PADDLE

Polyfet RF Devices

Plastic SDIC8

DRN BY	DT	SIZE	FSCM	ND.	REV
CHKD	KST	A			C
ELECT	9/26/11				
MECH	9/27/11				
PRDC					
QUAL					
PGMS					