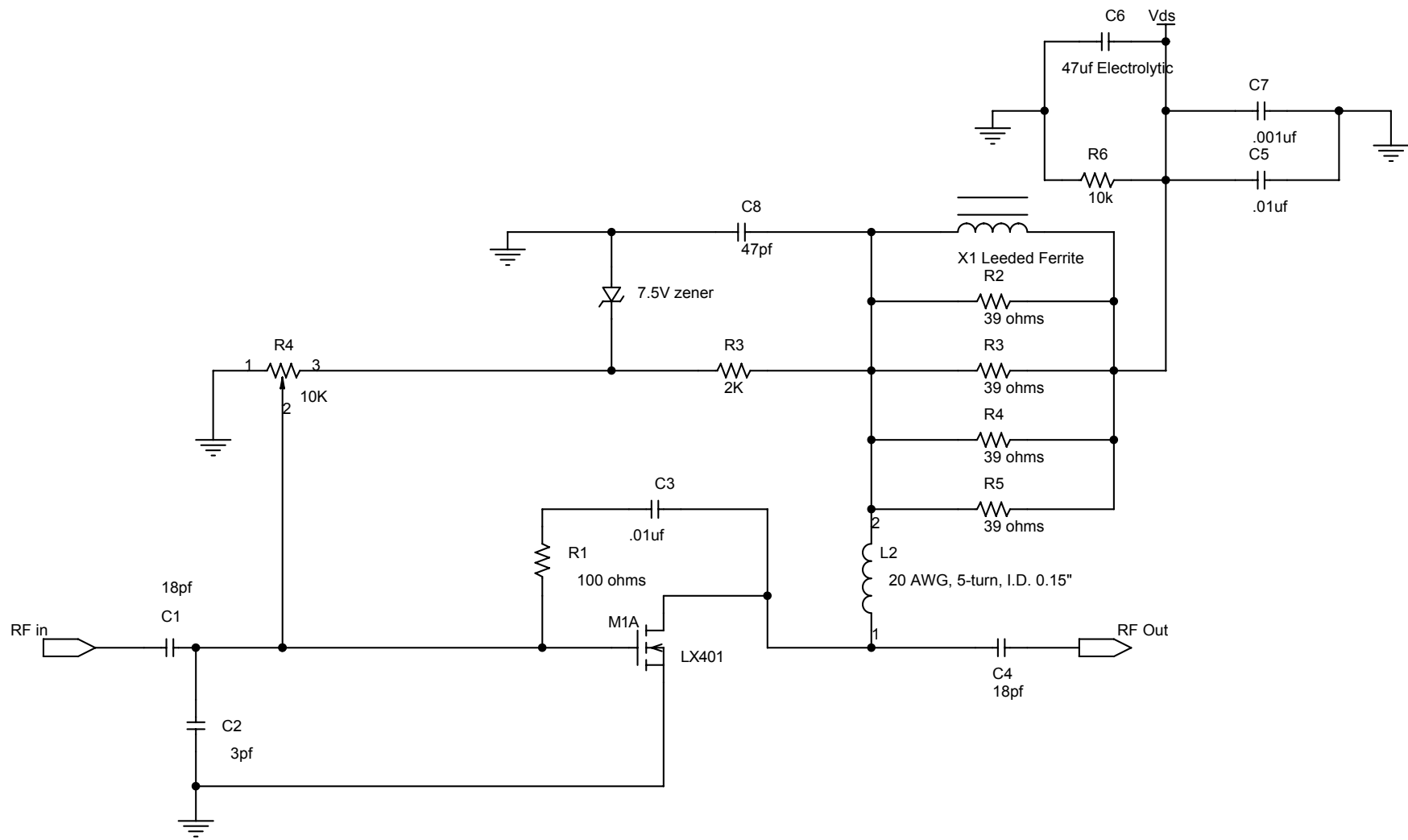
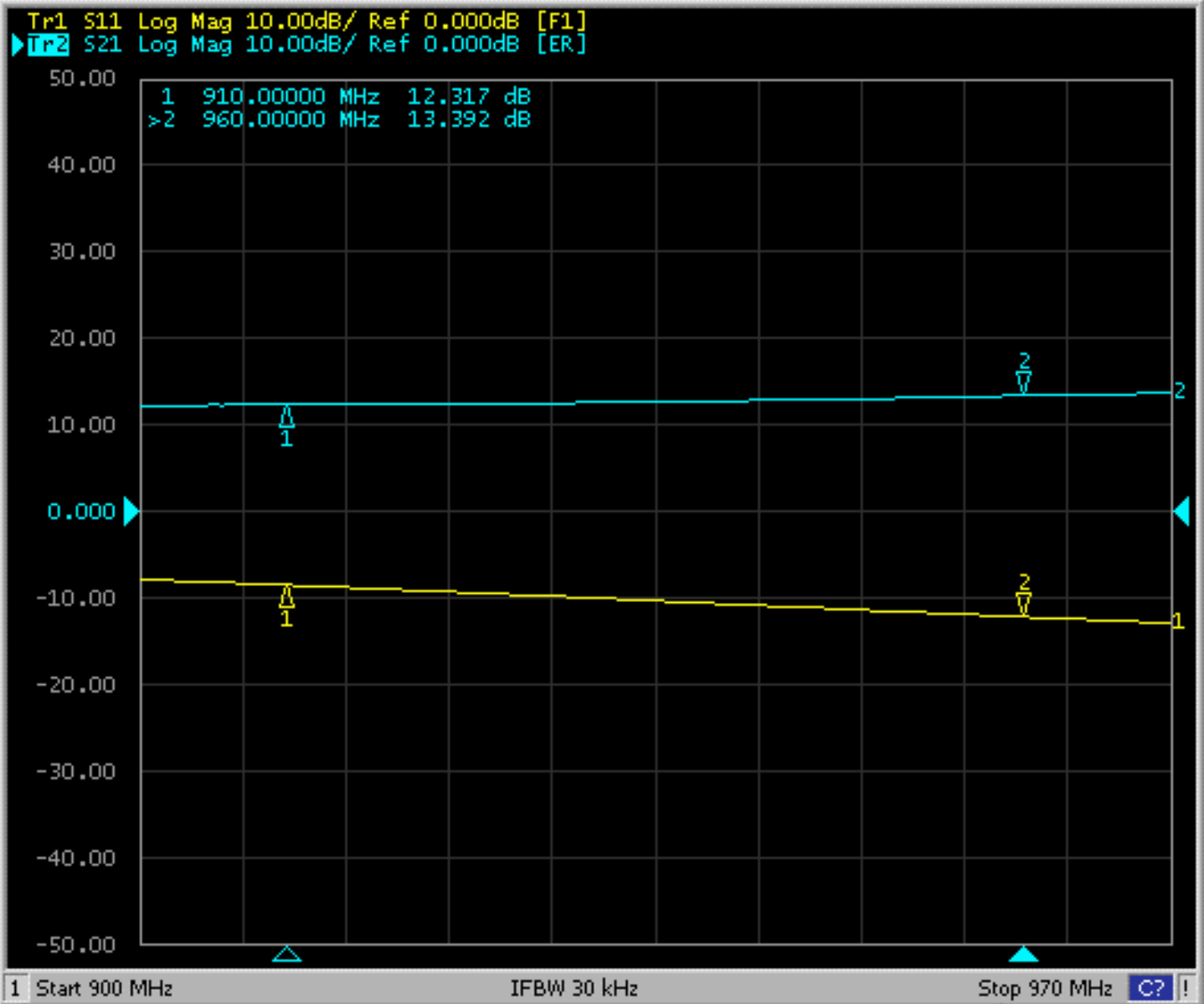


SYMBOL	VALUE	DESCRIPTION
C01/C03	18pf	ACT100B Chip Cap.
C02	3pf	ACT100B Chip Cap.
C04	47pf	ACT100B Chip Cap.
C05	47uf	63V Electrolytic
C06	.001uf	ACT100B Chip Cap.
C07	.01uf	ACT100B Chip Cap.
L01	20AWG	5turns, 1/4in dia.
L02	-----	Leaded ferrite
R01	2K	1206 Chip Res.
R02/03/04/05	39ohm	1206 Chip Res.
P01	10k	6x6mm Potentiometer
Z01	7.5V	50mA Zener Diode
VDD	28V	DC Power Supply
Bias	600mA	Bias for LX401
PCB	---	Teflon Er=2.54 .032in thick, 1oz

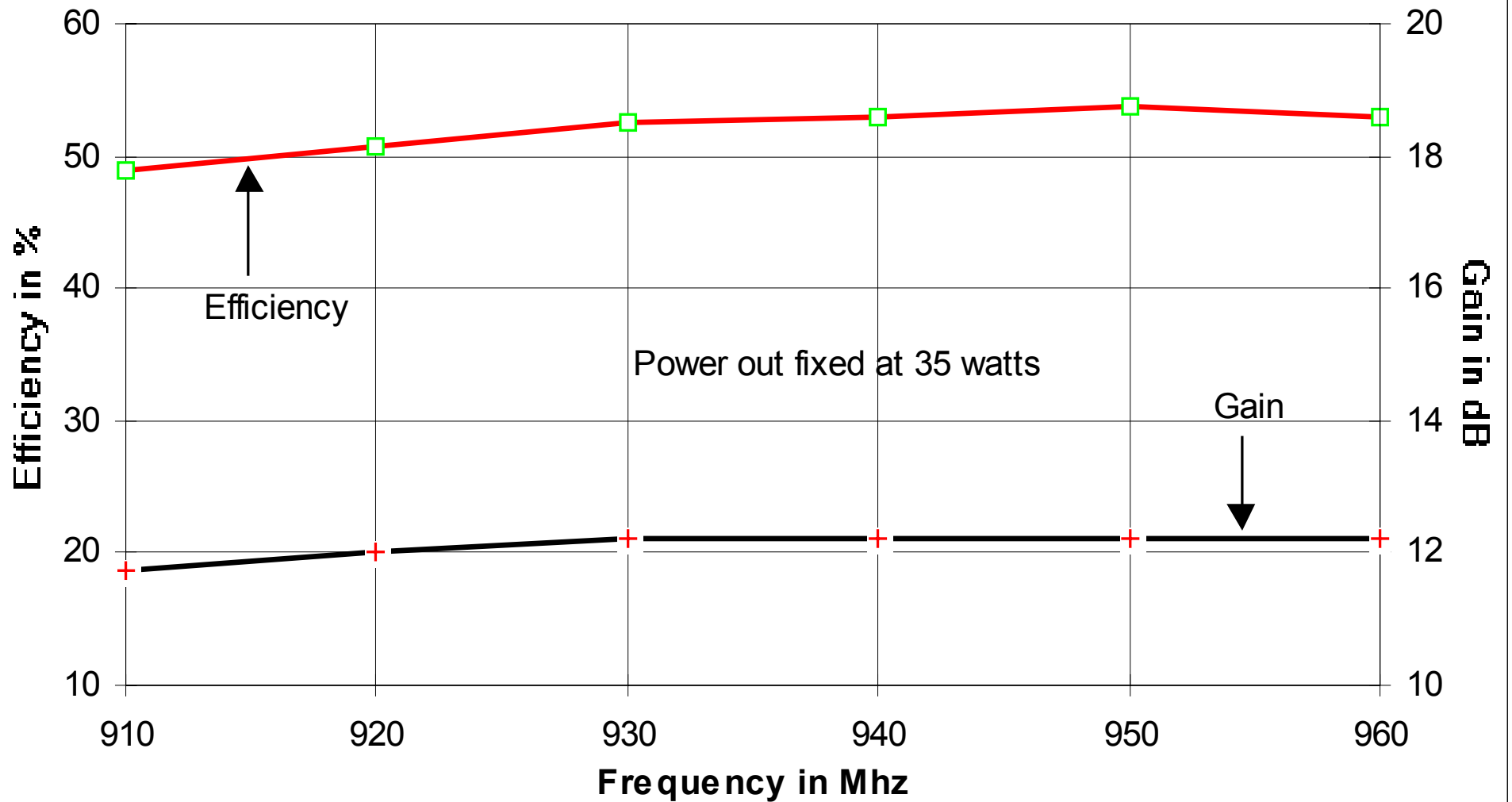
DRN BY: J Citrda	06/14/01	POLYFET RF DEVICES		
CHKD :				
ELECT :		910-960MHz Amplifier		
MECH :				
PROC :		SIZE	FSCM NO	REV
QUAL :			LX401, 35W P1dB	1
PGMS :		SCALE : 1 : 1	SHEET 1	OF 1



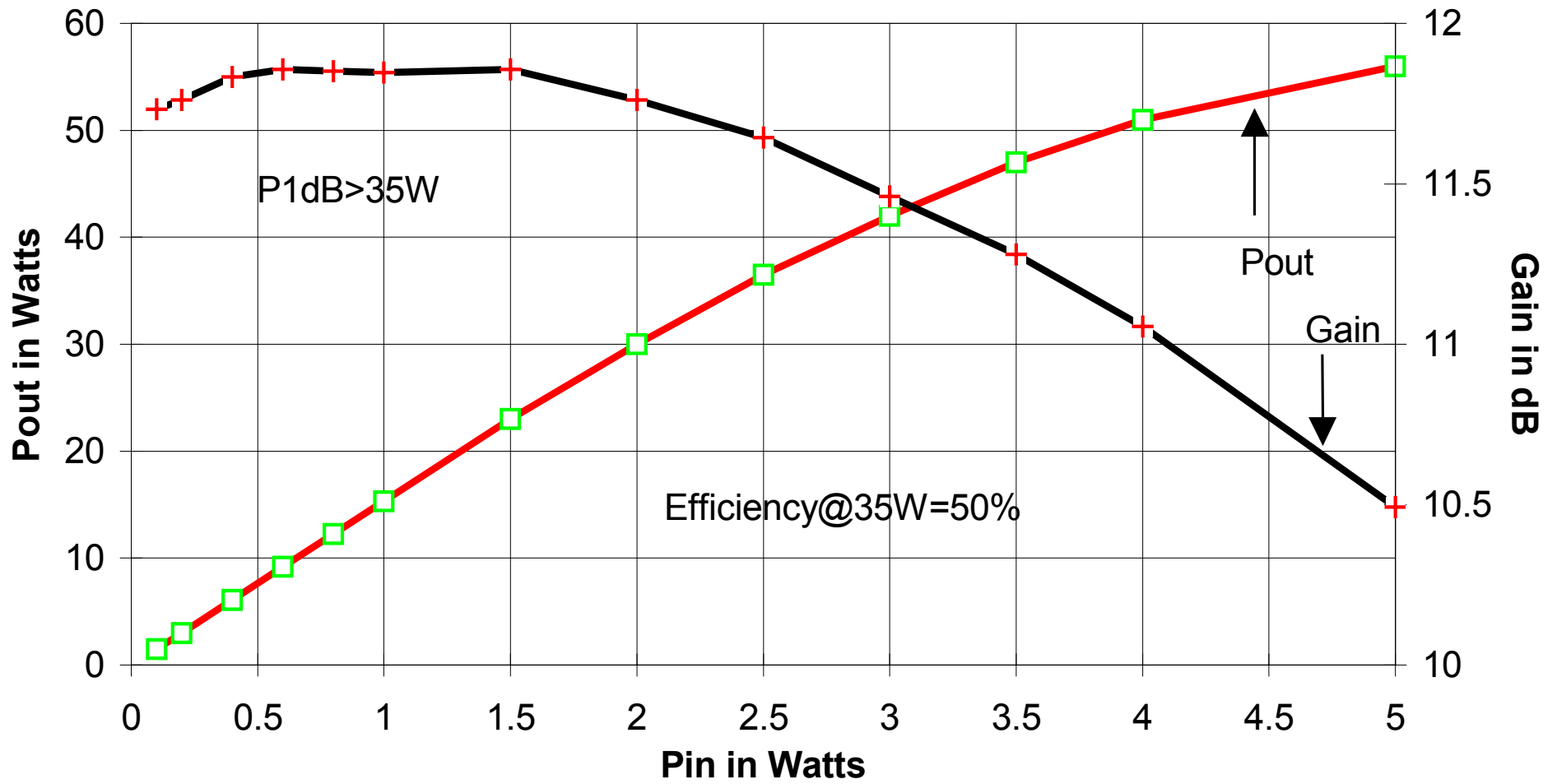
Title		
TB155 LX401 910-960MHz 35W		
Size	Document Number	Rev
A	1	A
Date:	Monday, June 04, 2007	Sheet 1 of 1



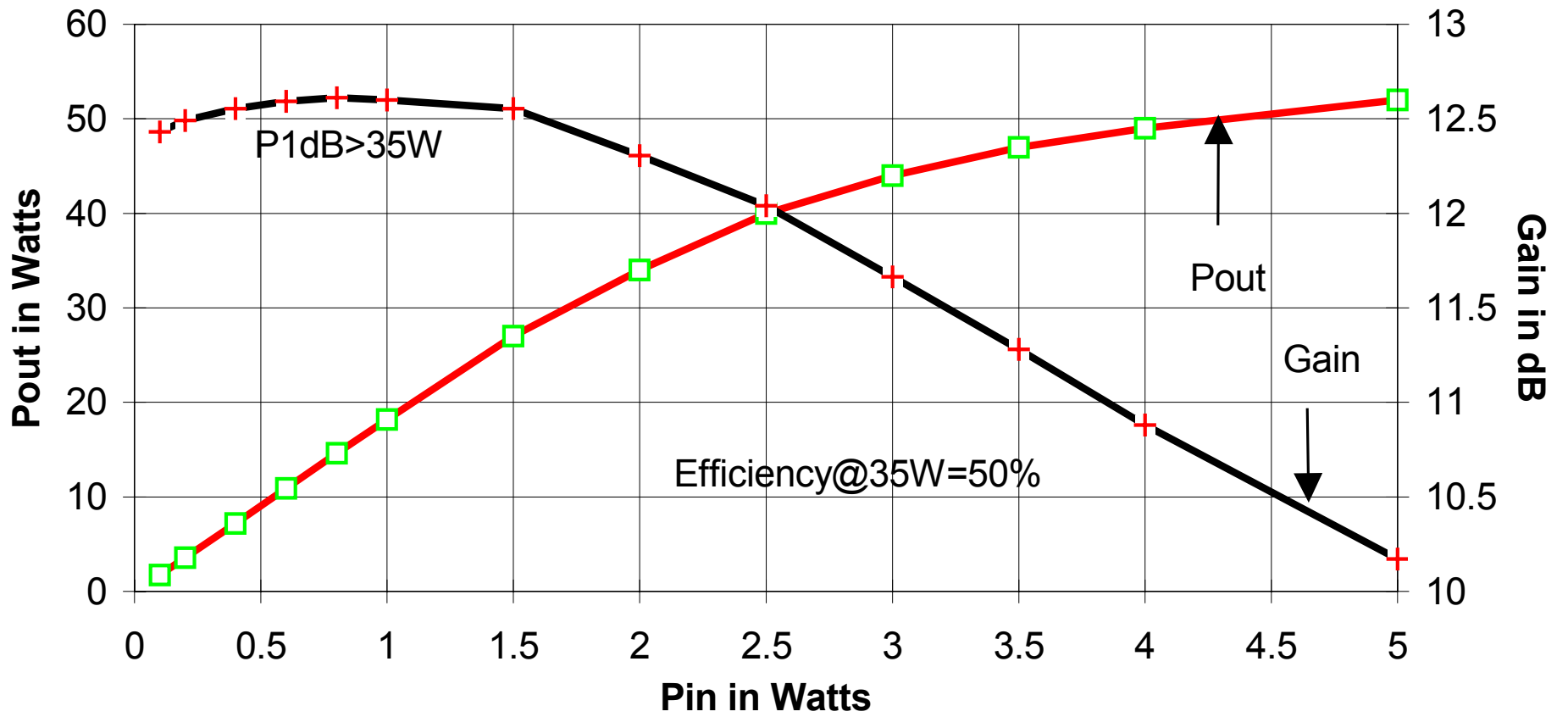
**TB-155 Freq vs Gain/Eff; Vds=28Vdc, Idq=.6A**



**TB-155 Pin vs Pout Freq=910Mhz; Vds=28Vdc, Idq=.6A**



# TB-155 Pin vs Pout Freq=935Mhz; Vds=28Vdc, Idq=.6A



**TB-155 Pin vs Pout Freq=960Mhz; Vds=28Vdc, Idq=.6A**

