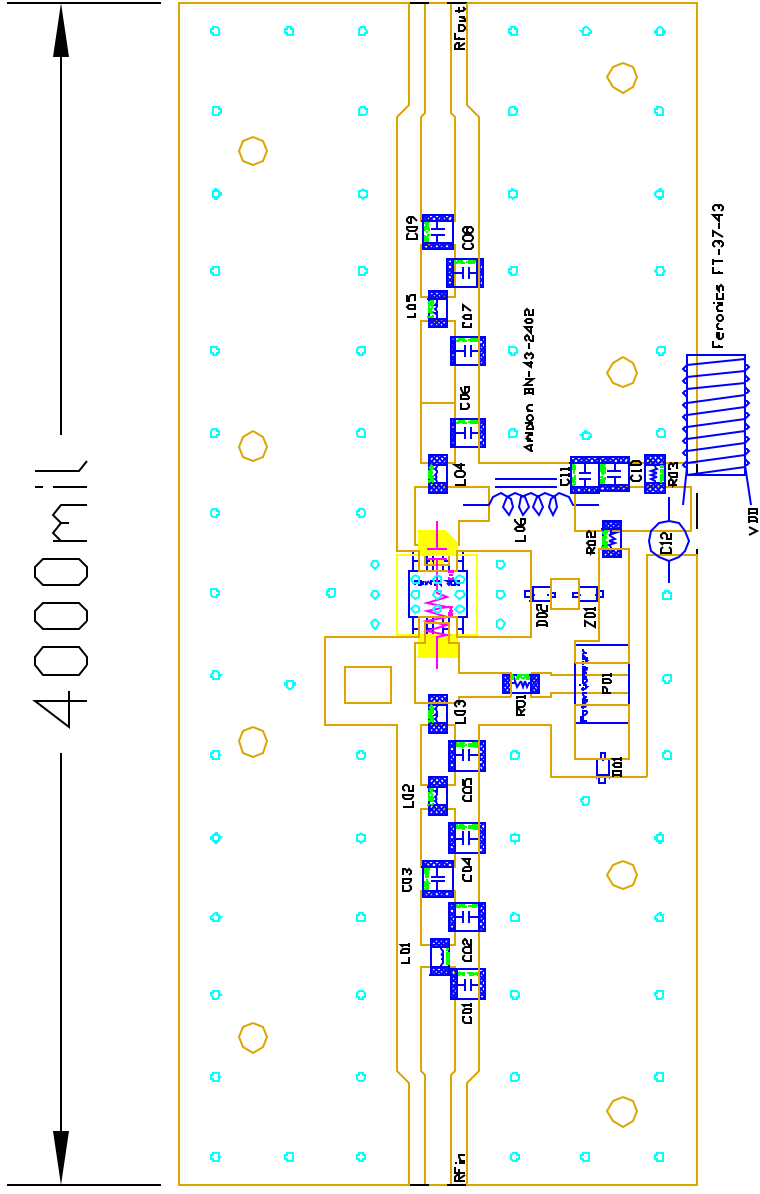


D4 10MA
 10K Pot
 D5 7.5V
 D6 10MA
 TB-158, S8201
 P1dB=1.5W
 100-1000Mhz
 28Vdc, 400ma

DRN BY	J. Citrolo	10/24/02
CHKD		
ELECT		
MECH		
PROC		
QUAL		
PGMS		
Polyfet RF Devices		
TB158A 10-1000Mhz 1W		
SIZE	FSCM NO.	REV
	S8201 Vds=28Vdc Idq=250ma	A



SYMBOL	VALUE	DESCRIPTION
C01	24pf	ACT100B Chip Cap.
C02	4.3pf	ACT100B Chip Cap.
C03,C10,C11	.01uf	ACT100B Chip Cap.
C04	3pf	ACT100B Chip Cap.
C05	8.2pf	ACT100B Chip Cap.
C06	3.6pf	ACT100B Chip Cap.
C07	3pf	ACT100B Chip Cap.
C08	1.7pf	ACT100B Chip Cap.
C09	1nf	ACT100B Chip Cap.
C10	1nf	ACT100B Chip Cap.
C11	47pf	ACT100B Chip Cap.
C12	47uf	63V electrolytic
C13	10nf	D-G feed back
L01	HP	22AWG 1 inch
L02	HP	22AWG .5 inches
L03	Short	22AWG .2 inches
L04	HP	22AWG .5 inches
L05	HP	22AWG .750 inches
L06	850mu	22AWG 2 turns
L07	850mu	22AWG 10 turns
R01	2.2K	1206 Chip Res.
R02	2.2K	1206 Chip Res.
R03	10K	1206 Chip Res.
R04	150ohm	1/2V Metal Film Res.
P01	10k	6x6mm Potentiometer
Z01	7.5V	10mA Zener Diode
D01/D02	7.5V	10mA Chip Diode
VDD	28Vdc	DC Power Supply
Bias	250ma	Bias for S8201

PCB Material: Double Side Teflon
 Er=2.5 H=31 1oz Cu

DRN BY: J. Citrda	10/24/06
CHKD :	
ELECT :	
MECH :	
PRDC :	
QUAL :	
PGMS :	
POLYFET RF DEVICES	
10-1000MHz Amplifier	
SIZE	F5CN M1
	S8201 28Vdc, 250ma
REV	A
SCALE :	1 : 1
SHEET	1 OF 1

