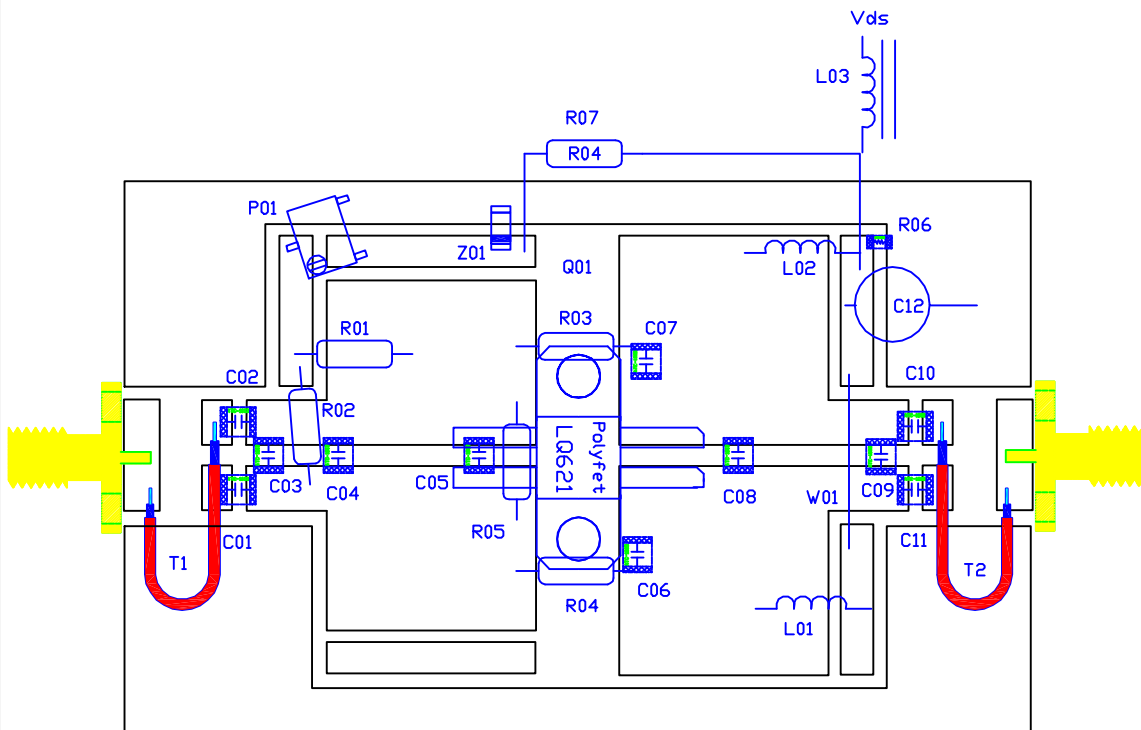


DRN BY	J.Citrolo	1/20/04	Polyfet RF Devices		
CHKD			TB189, 10W, 740-780MHz		
ELECT	J.Citrolo	1/20/04	SIZE	FSCM NO.	REV
MECH	J.Citrolo	1/20/04			LQ621 Vds=12.5Vdc Idq=.4A
PRDC					
GUAL					
PGMS					



SYMBOL	VALUE	DESCRIPTION
C01,02	15pF	ATC100B CHIP CAP.
C03	7.5pf	ATC100B CHIP CAP.
C04	9.1pf	ATC100B CHIP CAP.
C05	15pf	ATC100B CHIP CAP.
C06,C07	10nf	ATC200B CHIP CAP.
C08,C09	4.3uf	ATC100B CHIP CAP.
C10,C11	33pf	ATC100B CHIP CAP.
C12	47uf	25V electrolytic
R1,2	9.1K	1/4W axial resistor
R3,R4	100	1/4W axial
R5	10	1/4W axial
R6	13K	1/4W axial
R7	2.2K	1/4W axial
P01	10k	multi-turn POT
Z1	7.5V	5mA Zener diode
W1	22AWG	Jumper
T01,T02	2.5"	UT34-50ohm Coaxial balun
L01,L02	22AWG	ID:0.08", 6turns
L03	22AWG	850mu, 10 turns, binocular
Q1	LQ621	Polyfet Transistor
VDD	12.5V	DC Power Supply
Bias	400mA	Bias Current

PCB Material : Double Side TEFLON
 ER=2.55, H=0.032", T=0.001"

DRN BY: J Citrolo	1/20/04	POLYFET RF DEVICES	
CHKD :		TB189, 10W, 740-780MHZ	
ELECT : J Citrolo		SIZE	FSCM NO
MECH : J Citrolo		LQ621, Vds=12.5Vdc, Idq=400ma	
PROC :		SCALE : 1 : 1	REV 0
QUAL :		SHEET 1 OF 1	
PGMS :			