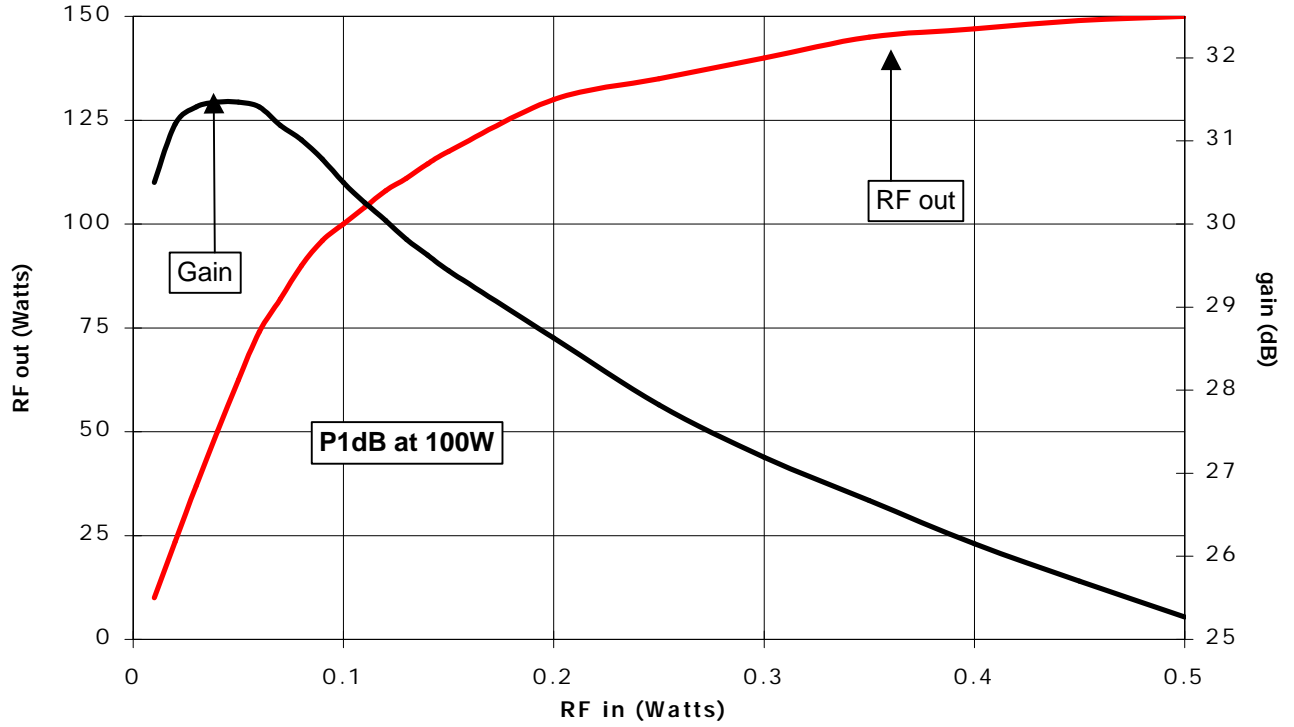
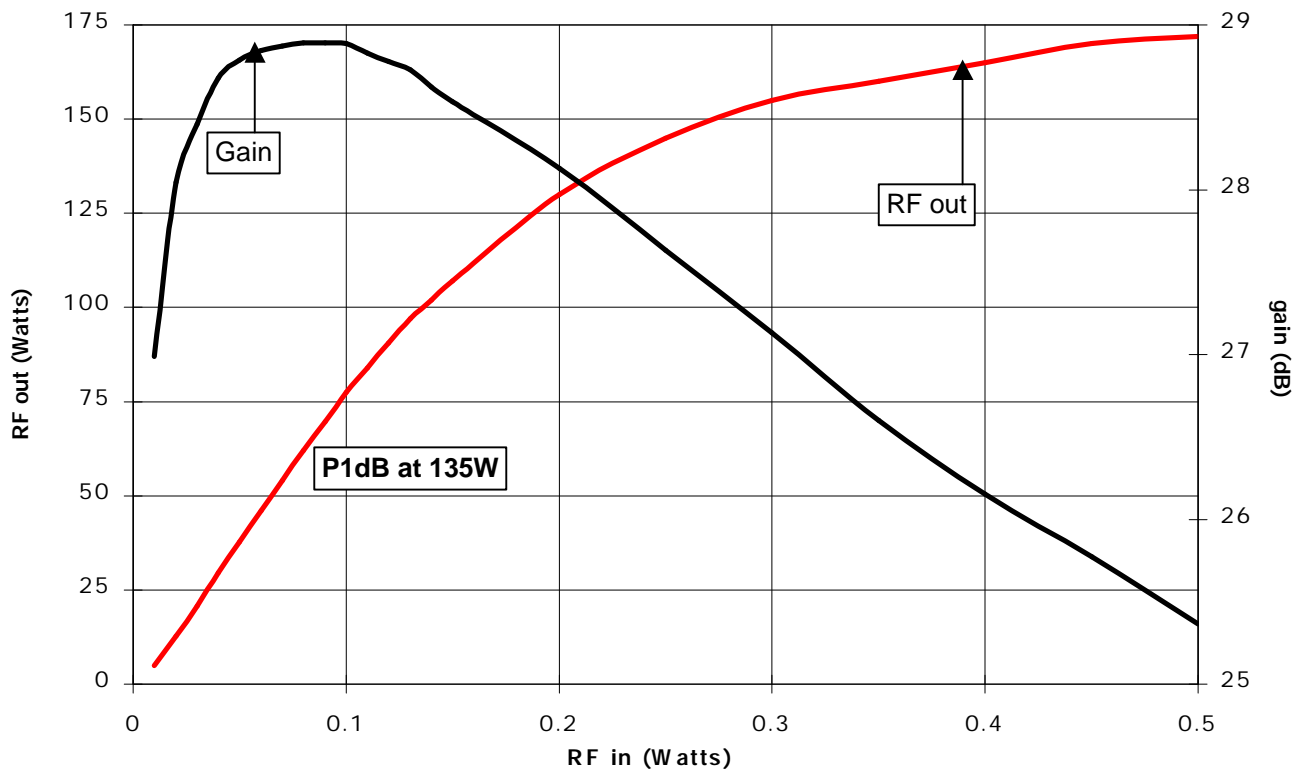
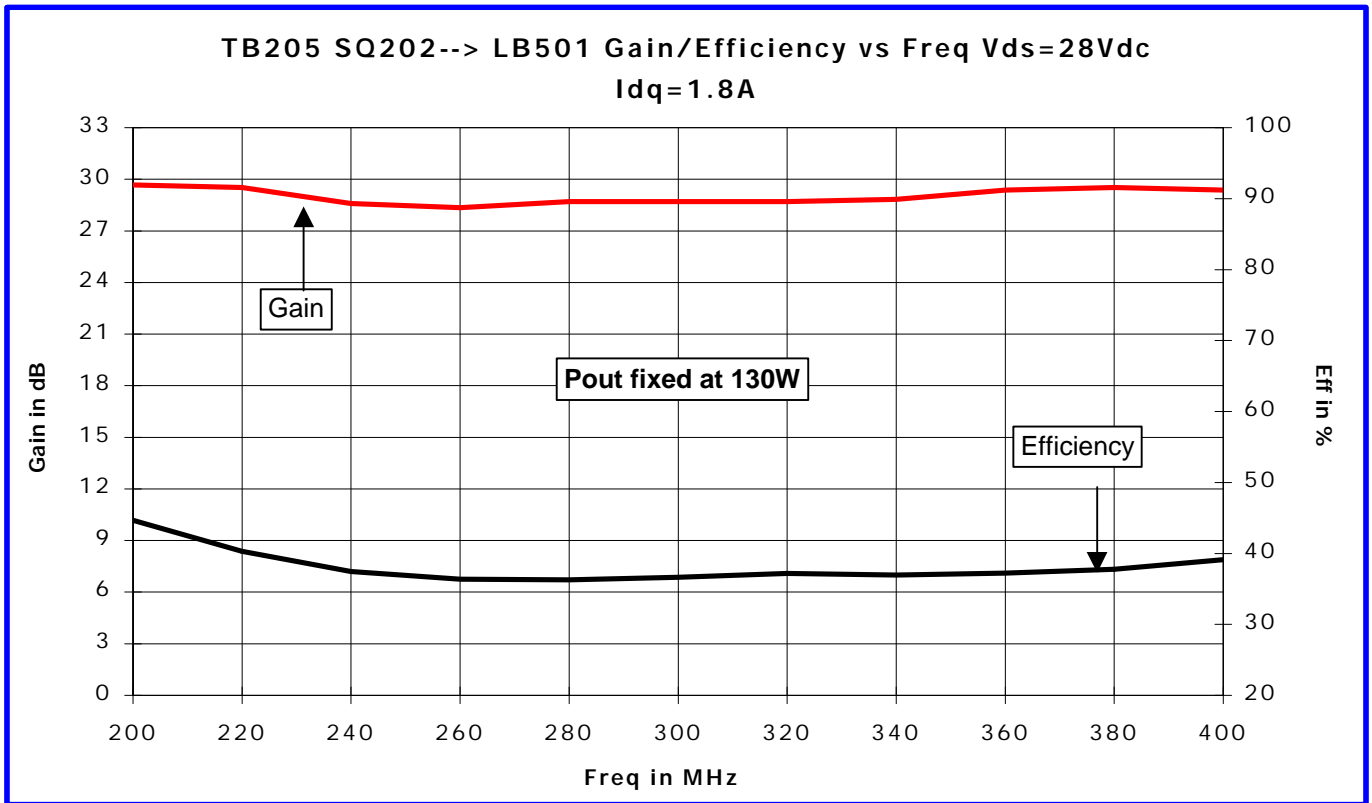
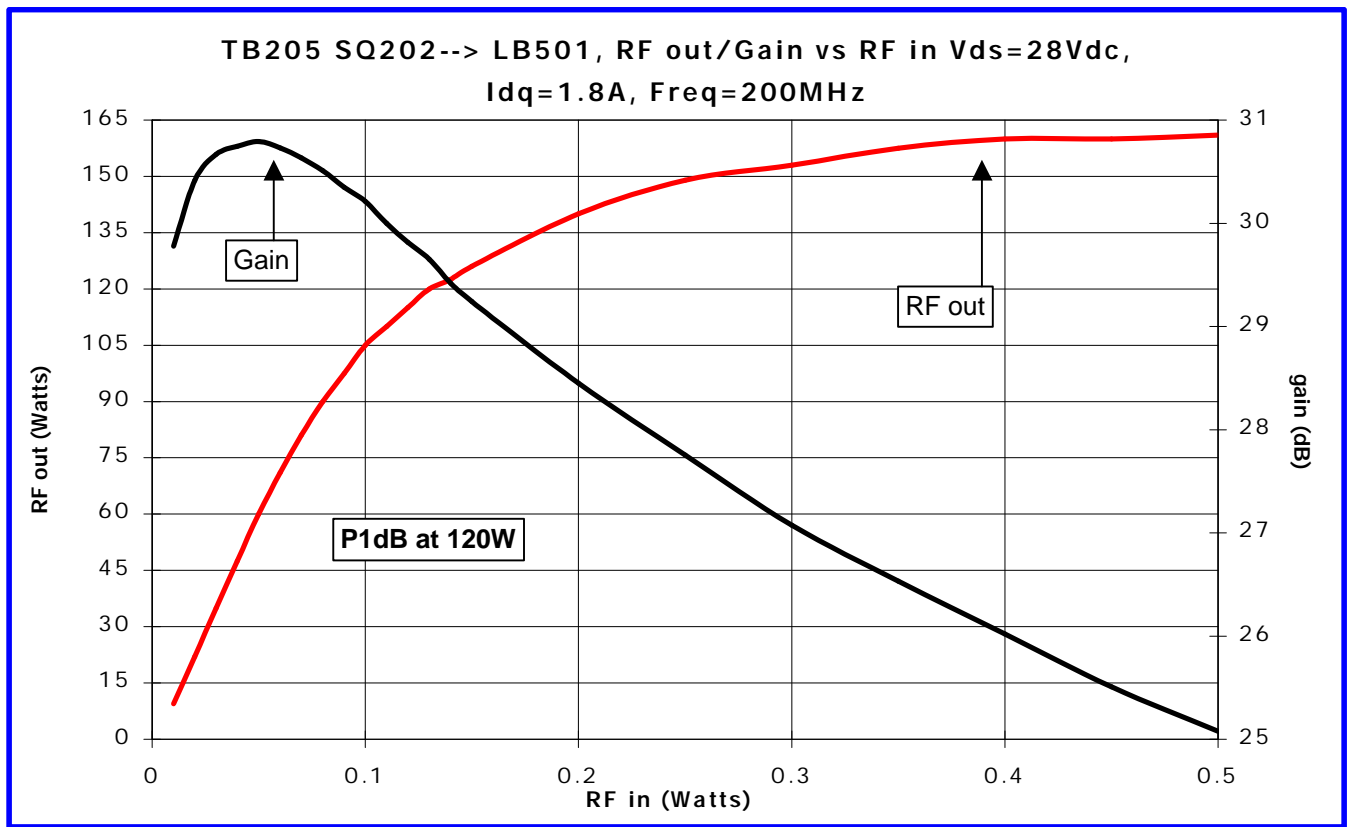


TB205 SQ202--> LB501, RF out/Gain vs RF in Vds=28Vdc, Idq=1.8A, Freq=400MHz



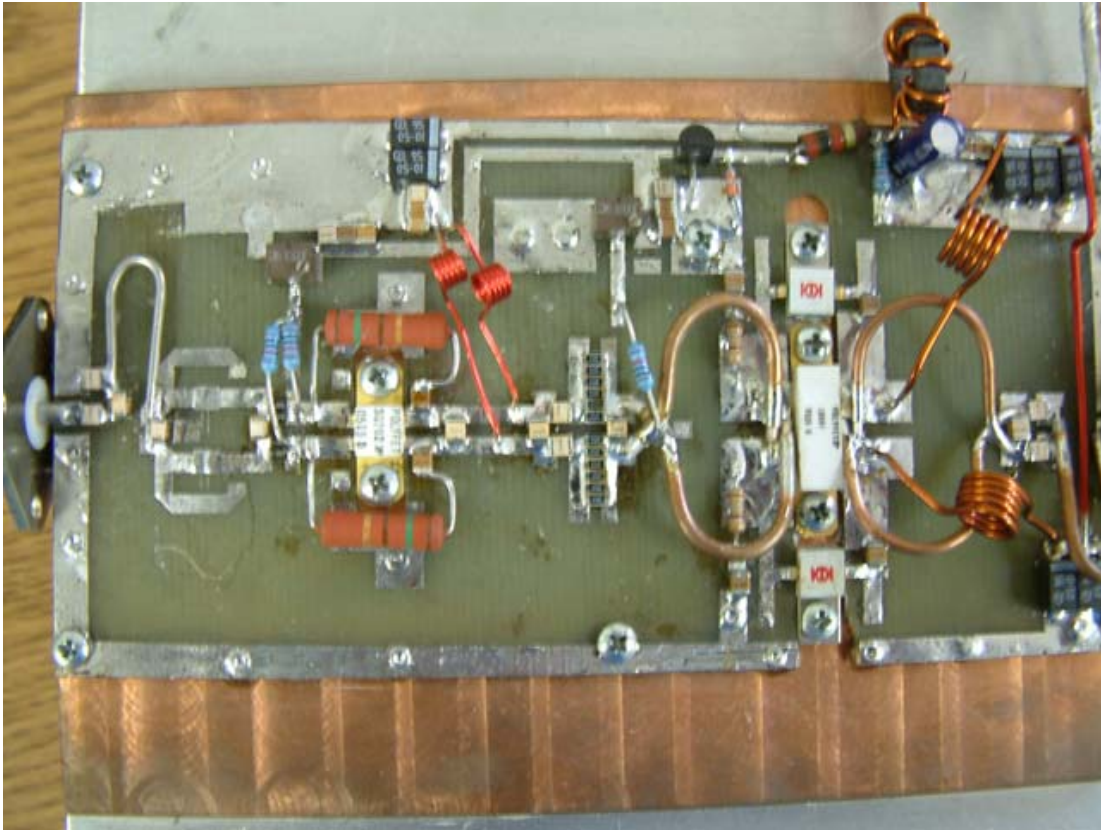
TB205 SQ202--> LB501, RF out/Gain vs RF in Vds=28Vdc, Idq=1.8A, Freq=300MHz



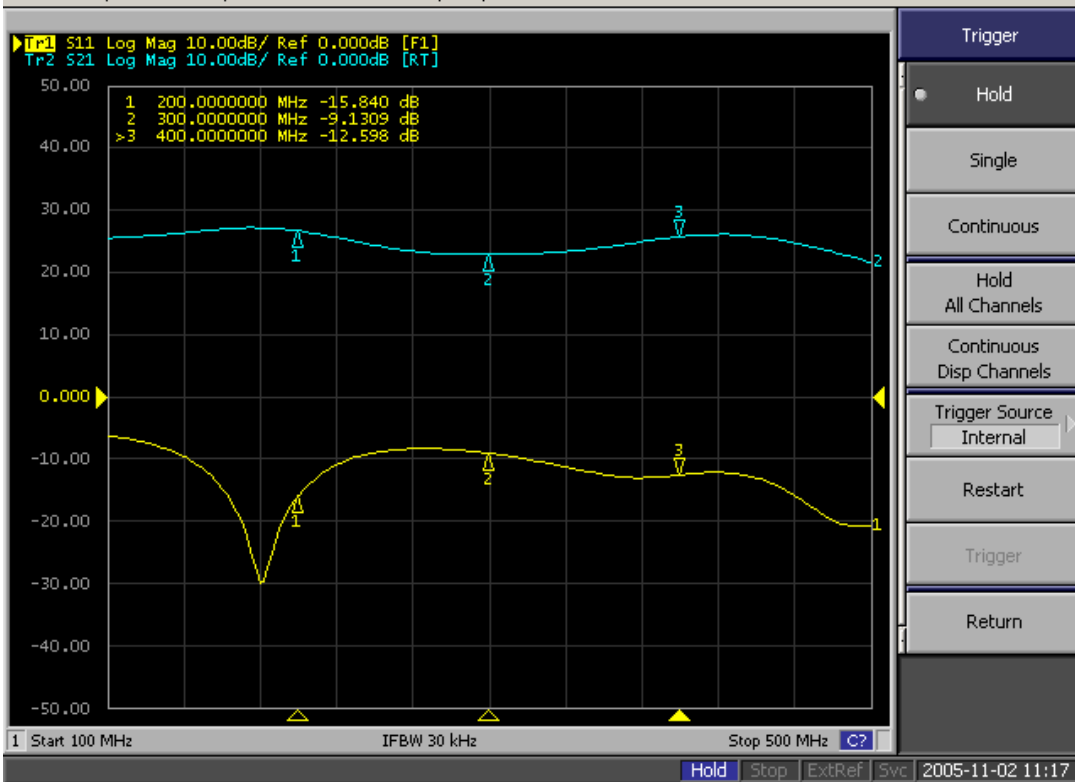


50W PEP

| F1 | F2 | 3rd Order | 5th Order | Pout W/tone | Pout dBm/tone | IP3 |
|-----|-------|-----------|-----------|-------------|---------------|-------|
| 200 | 200.1 | -33.6 | -36.50 | 12.5 | 41.0 | 57.77 |
| 300 | 300.1 | -31.67 | -36.00 | 12.5 | 41.0 | 56.80 |
| 400 | 400.1 | -31.33 | -37.00 | 12.5 | 41.0 | 56.63 |



1 Active Ch/Trace 2 Response 3 Stimulus 4 Mkr/Analysis 5 Instr State



Small-signal plot of TB205. SQ202->LB501 Vds=28V Idq=1.8A (1.4A+0.4A)