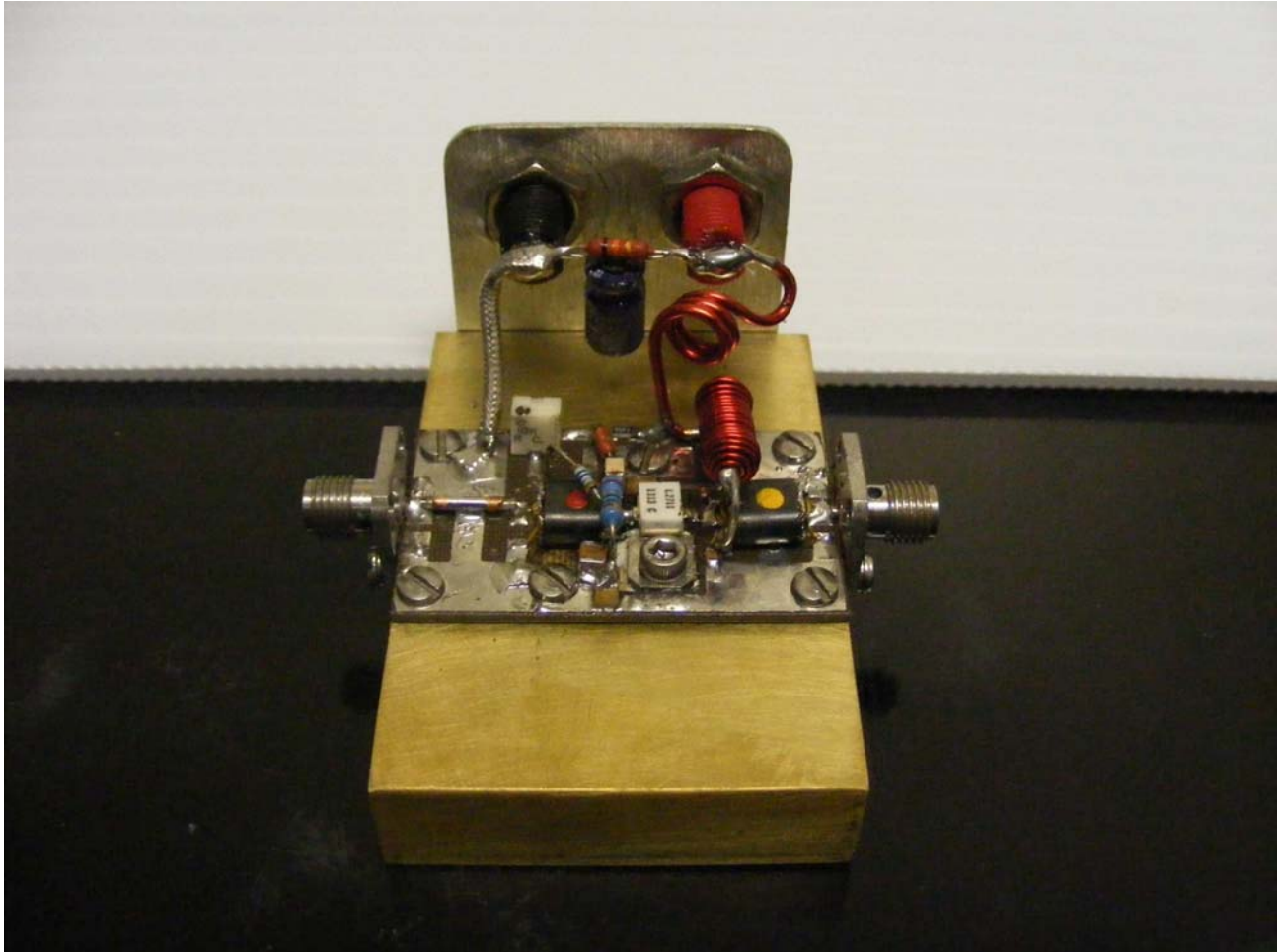
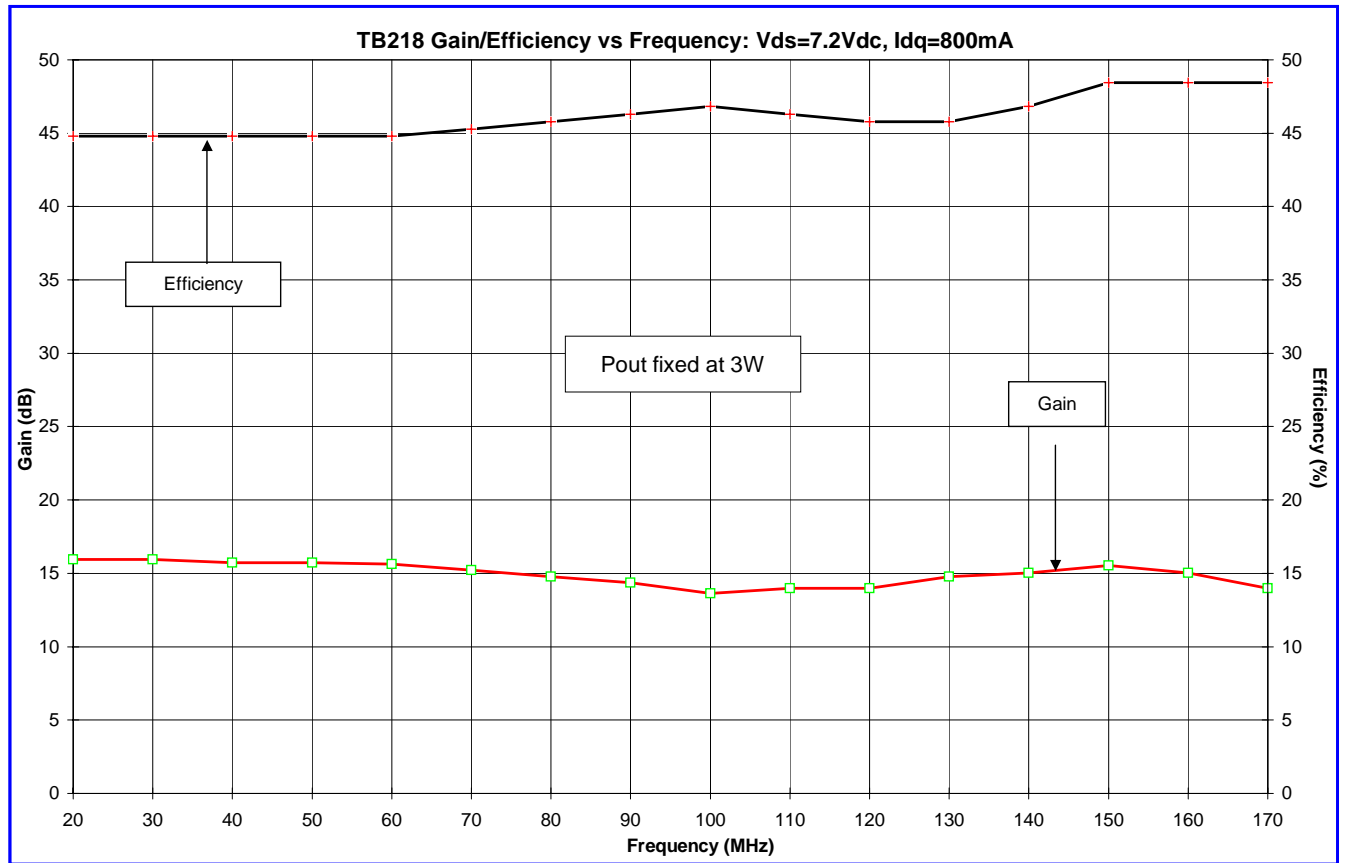
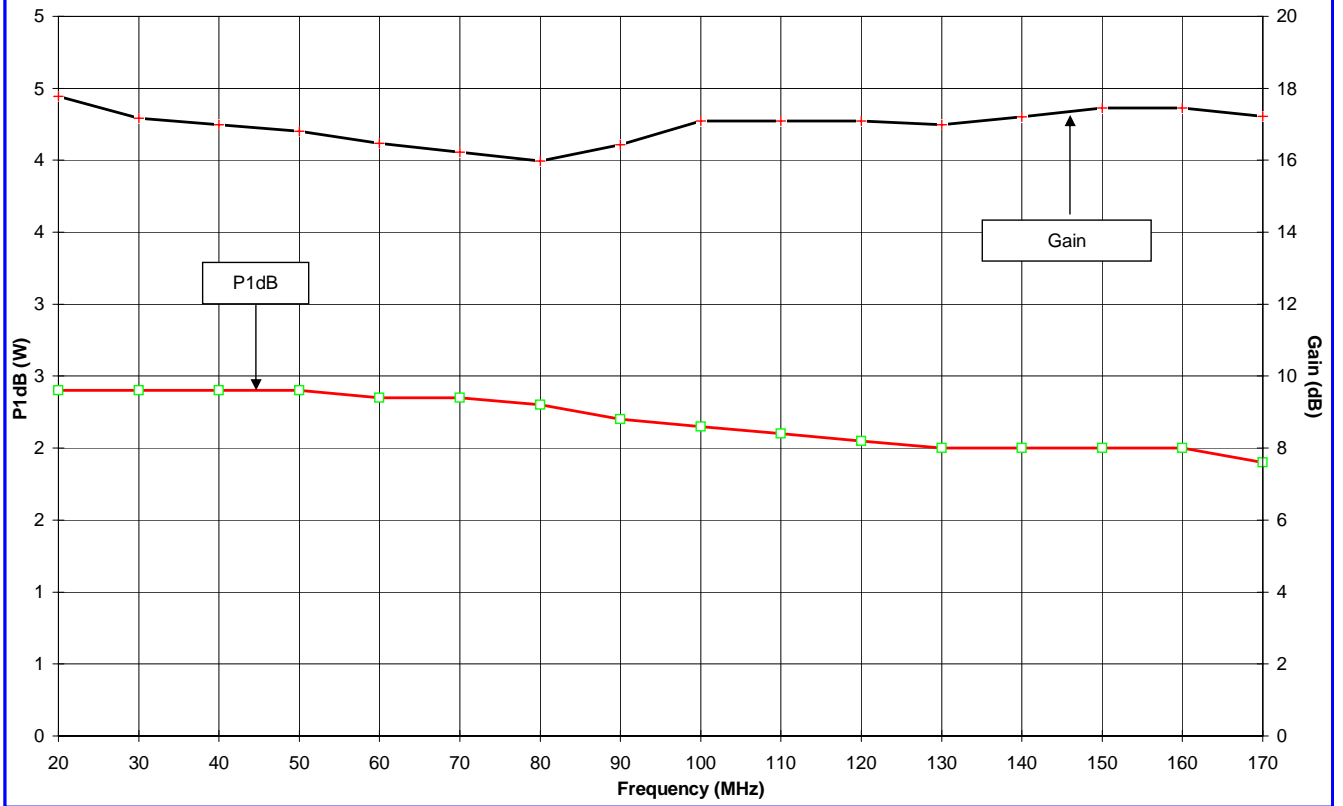


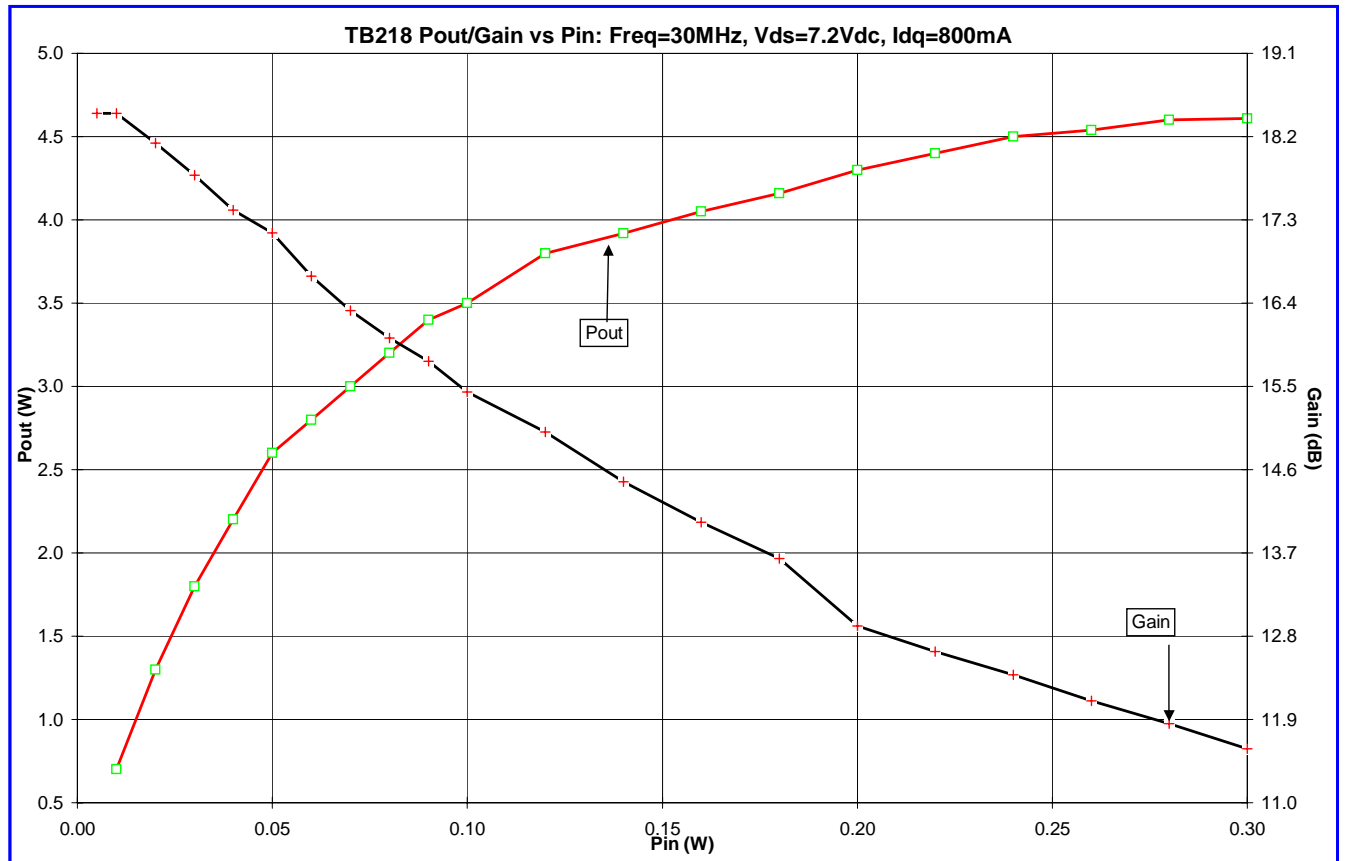
TB218 Freq:30-162Mhz, Vds=7.2Vdc, Idq=800mA

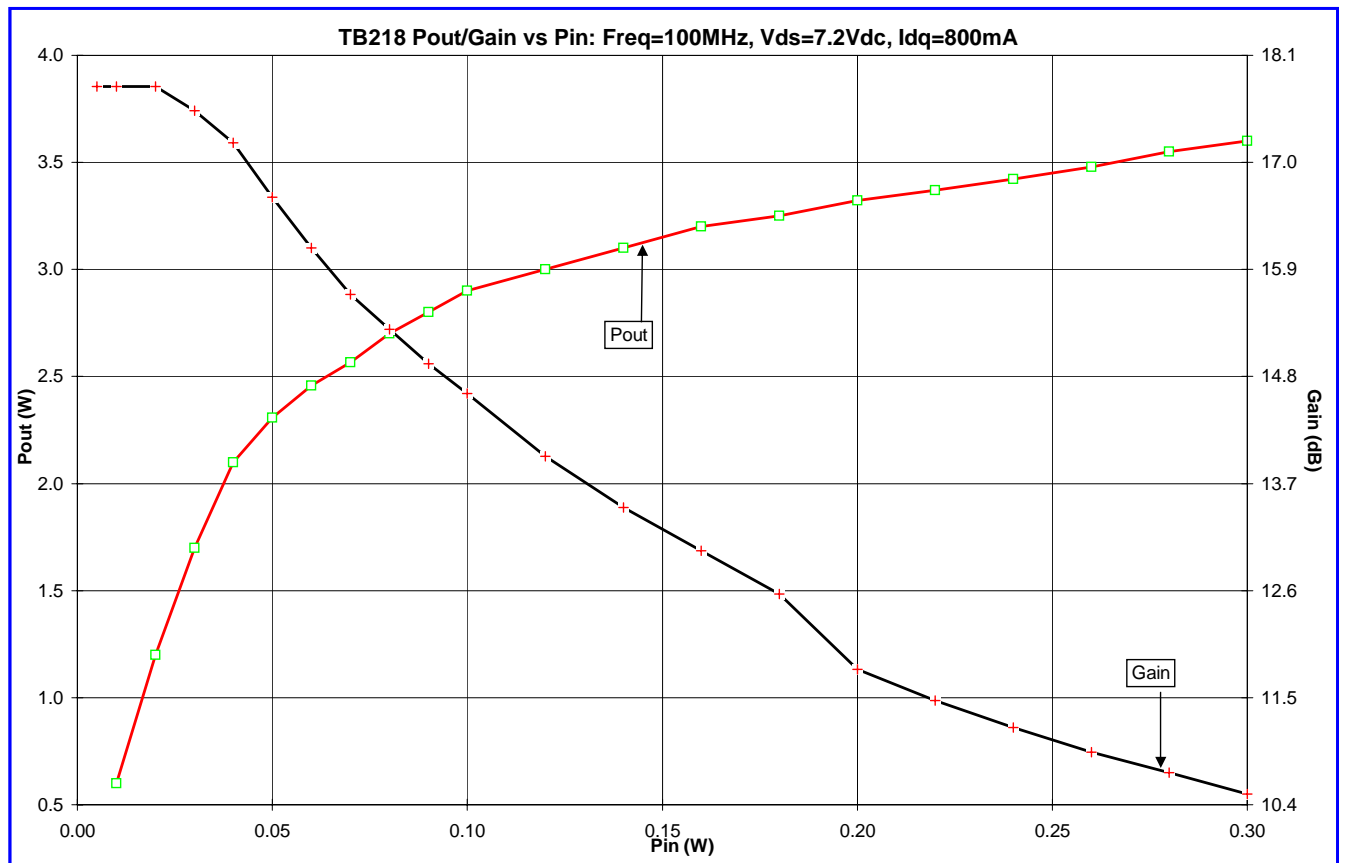


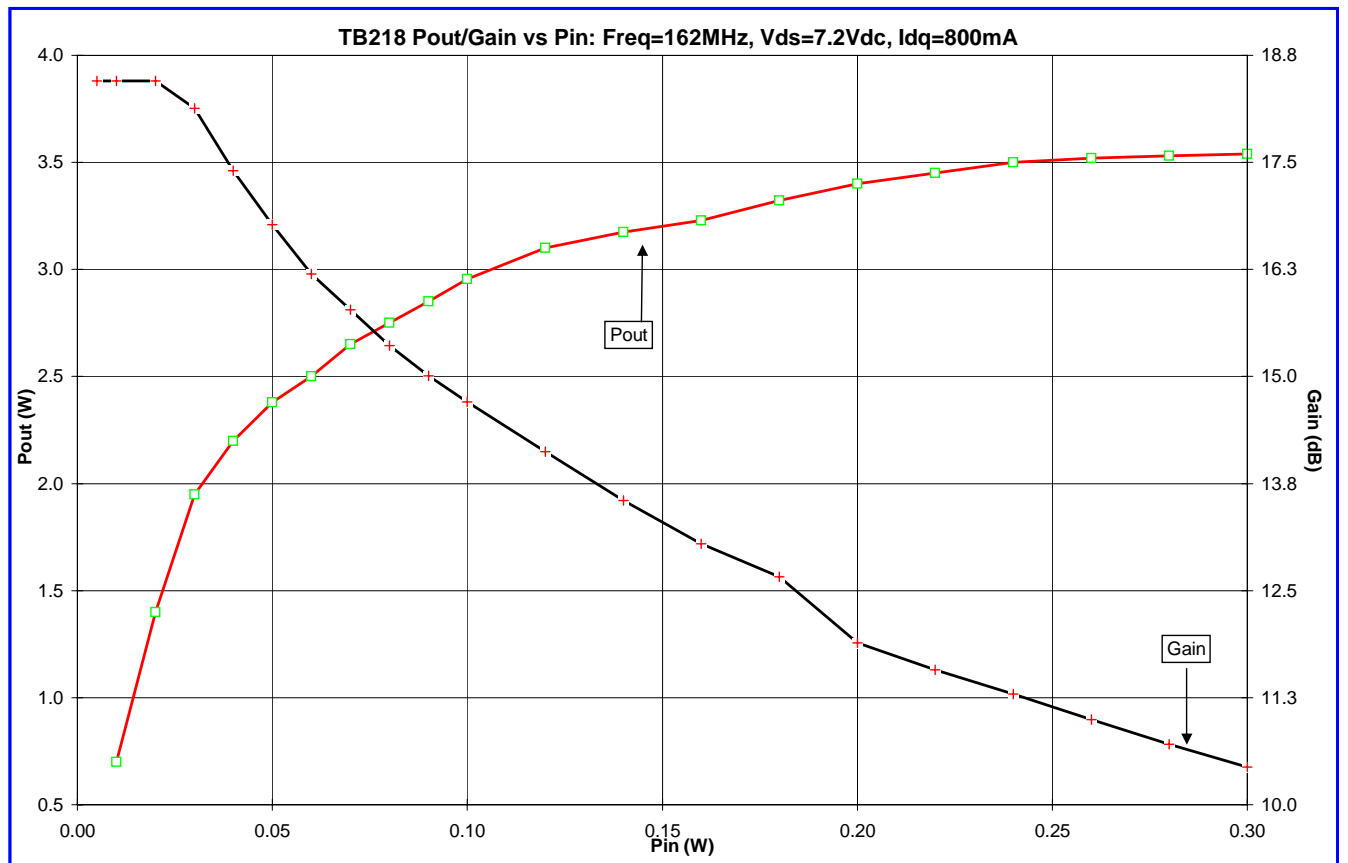


TB218 P1dB/Gain vs Frequency: Vds=7.2Vdc, Idq=800mA



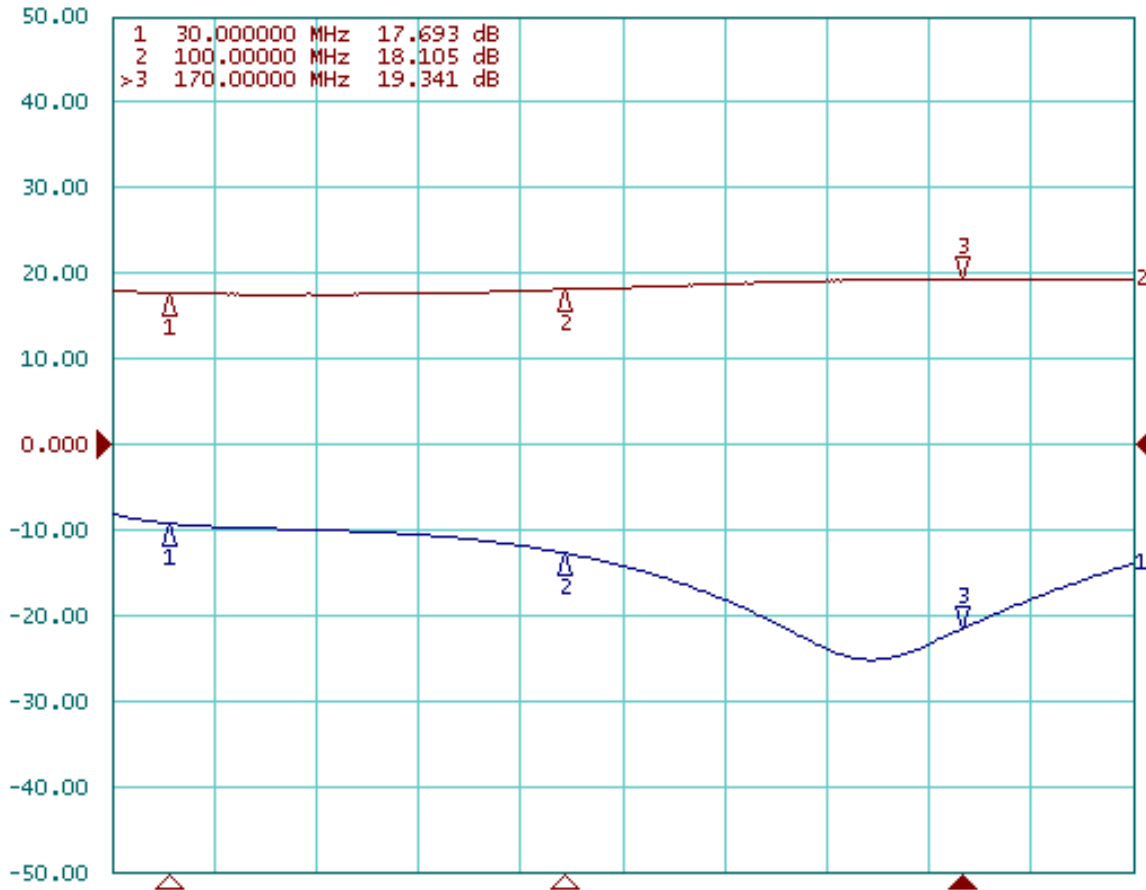






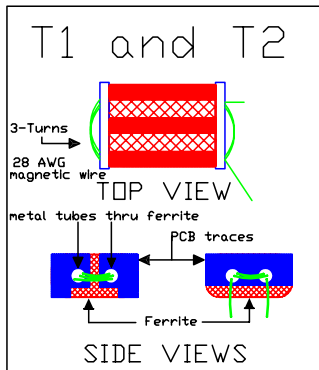
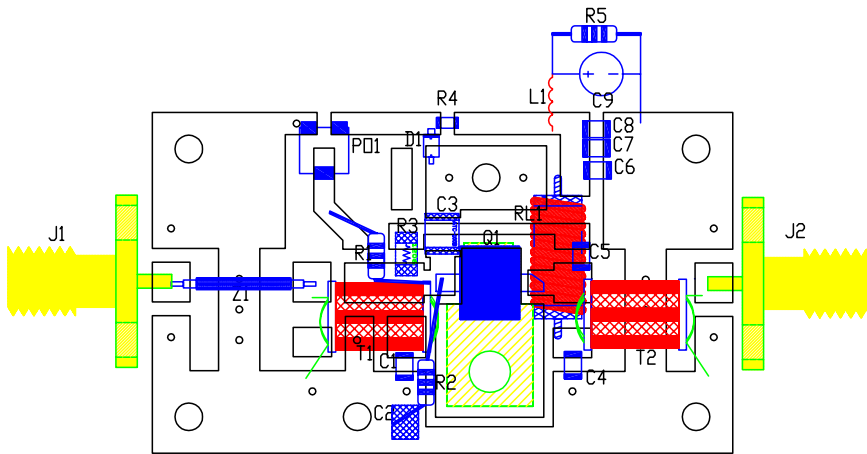
1 Active Ch/Trace 2 Response 3 Stimulus 4 Mkr/Analysis 5 Instr State

Tr1 S11 Log Mag 10.00dB/ Ref 0.000dB [F1 Smo]
Tr2 S21 Log Mag 10.00dB/ Ref 0.000dB [ER Smo] TB218, Vds=7.2Vdc, Idq=800mA, Pin=10dBm



1 Start 20 MHz IFBW 30 kHz Stop 200 MHz 2/2 Cor

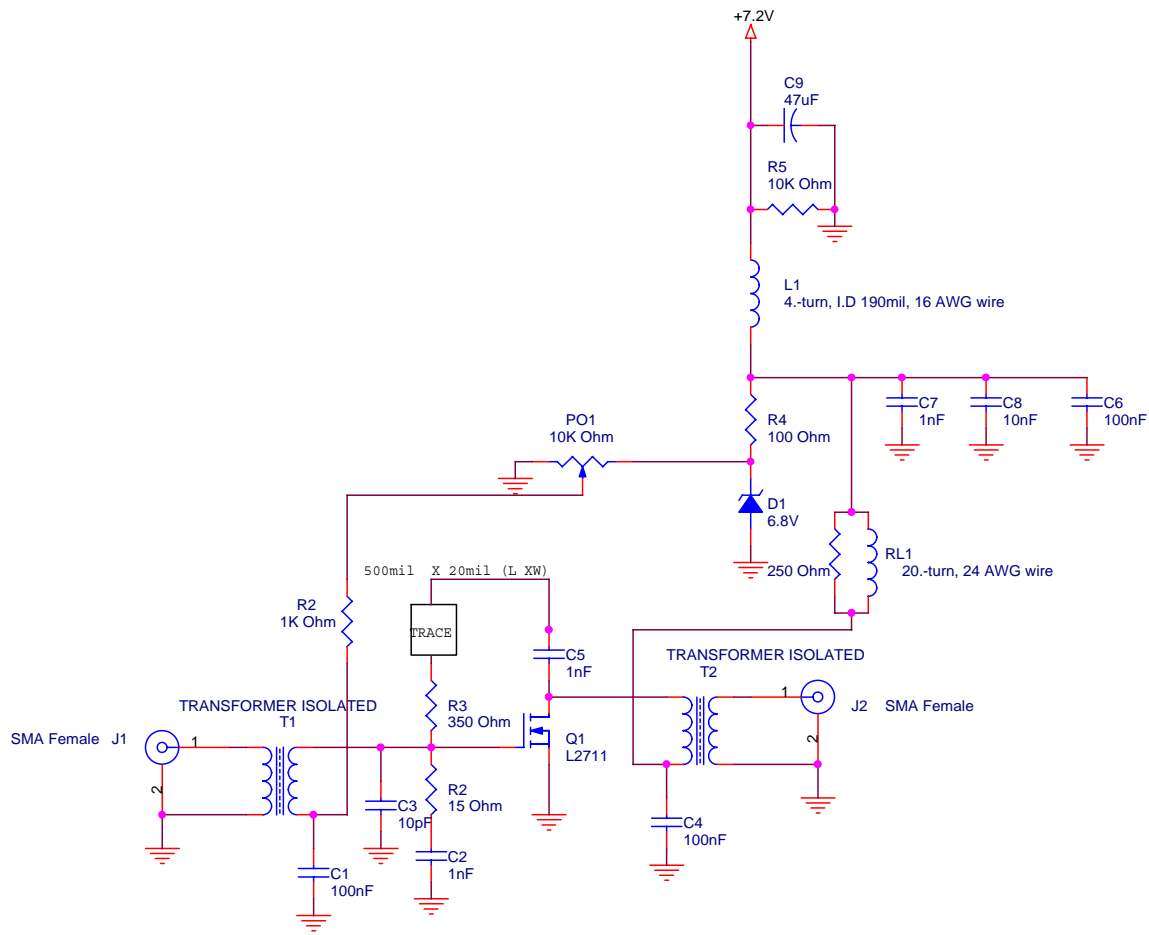
PCB Material : Double Side FR4
 H=0.060", T=0.001"



SYMBOL	VALUE	DESCRIPTION
Z1	50Ω	semi rigid UT-056-50
C1,C4,C6	100nF	0805 CHIP Cap.
C2	1nF	ATC100B CHIP Cap.
C3	10pF	ATC100B CHIP Cap.
C5,C7	1nF	0805 CHIP Cap.
C8	10nF	0805 CHIP Cap
C9	47uF	Electrolytic Cap.
R1	1KΩ	Axial Resistor
R2	15Ω	Axial Resistor
R3	350Ω	1206 CHIP Resistor
R4	100Ω	0805 CHIP Resistor
R5	10KΩ	Axial Resistor
RL1	24 AWG	parallel:coil wire/150ohm
L1	16 AWG	ID:200mils, 4turns coil
D1	6.8V	5mA Zener Diode
Q1	L2711	Polyfet Transistor
T1	28 AWG	850ui,BN43-2402,3-turn
T2	28 AWG	125ui BN43-2402,3-turn
J1,J2	SMA	4 Hole Panel Mount
P01	10K	10-Turn Trimmer
Vds	7.2Vdc	DC Power Supply
Bias	800mA	Quiescent Current

DRN BY	M. Cervantes	6/15/11
UPDATED		
ELECT	M. Cervantes	6/15/11
MECH	M. Cervantes	6/15/11
PRDC		
QUAL		
PGMS		

Polyfet RF Devices			
Freq: 30-162Mhz, Pout=3W			
SIZE	SCALE	L2711 7.2V, 800mA	REV
	1:1		0



Title		
TB218		
Size	Document Number	Rev
A	L2711, Vds=7.2, Idq=800mA, 30-162Mhz	A
Date:	Wednesday, June 15, 2011	Sheet 1 of 1