

TB227

Frequency=10-100MHz

Pout=10W

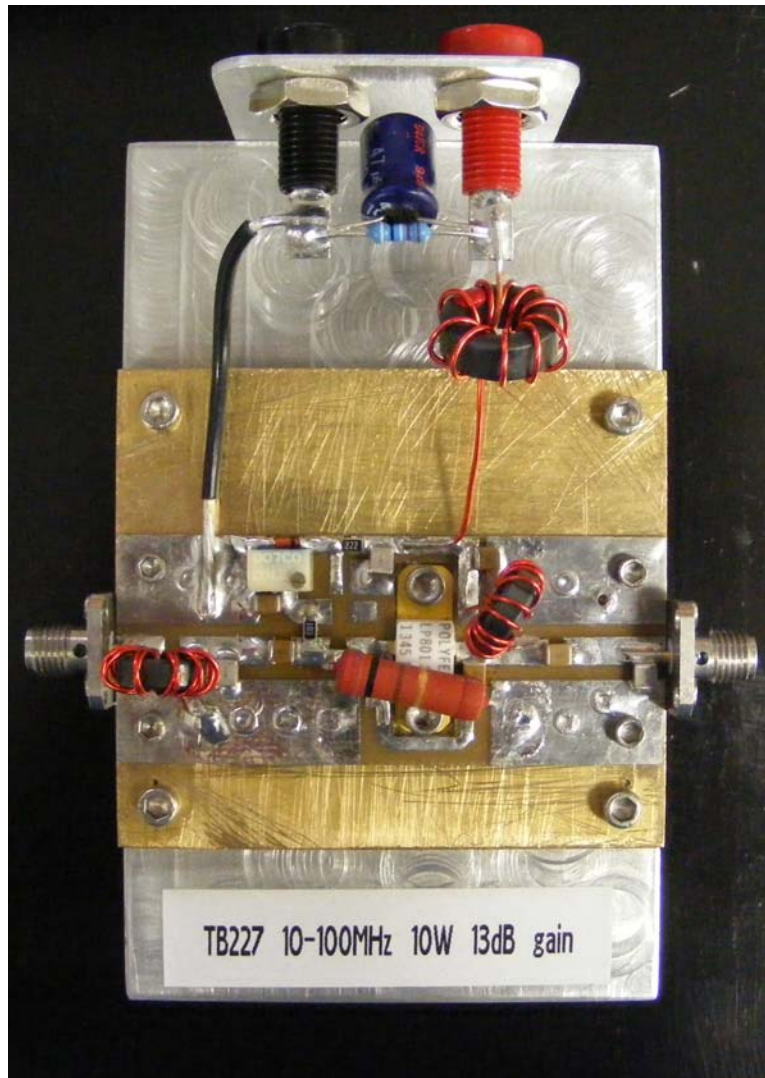
Gain=13dB

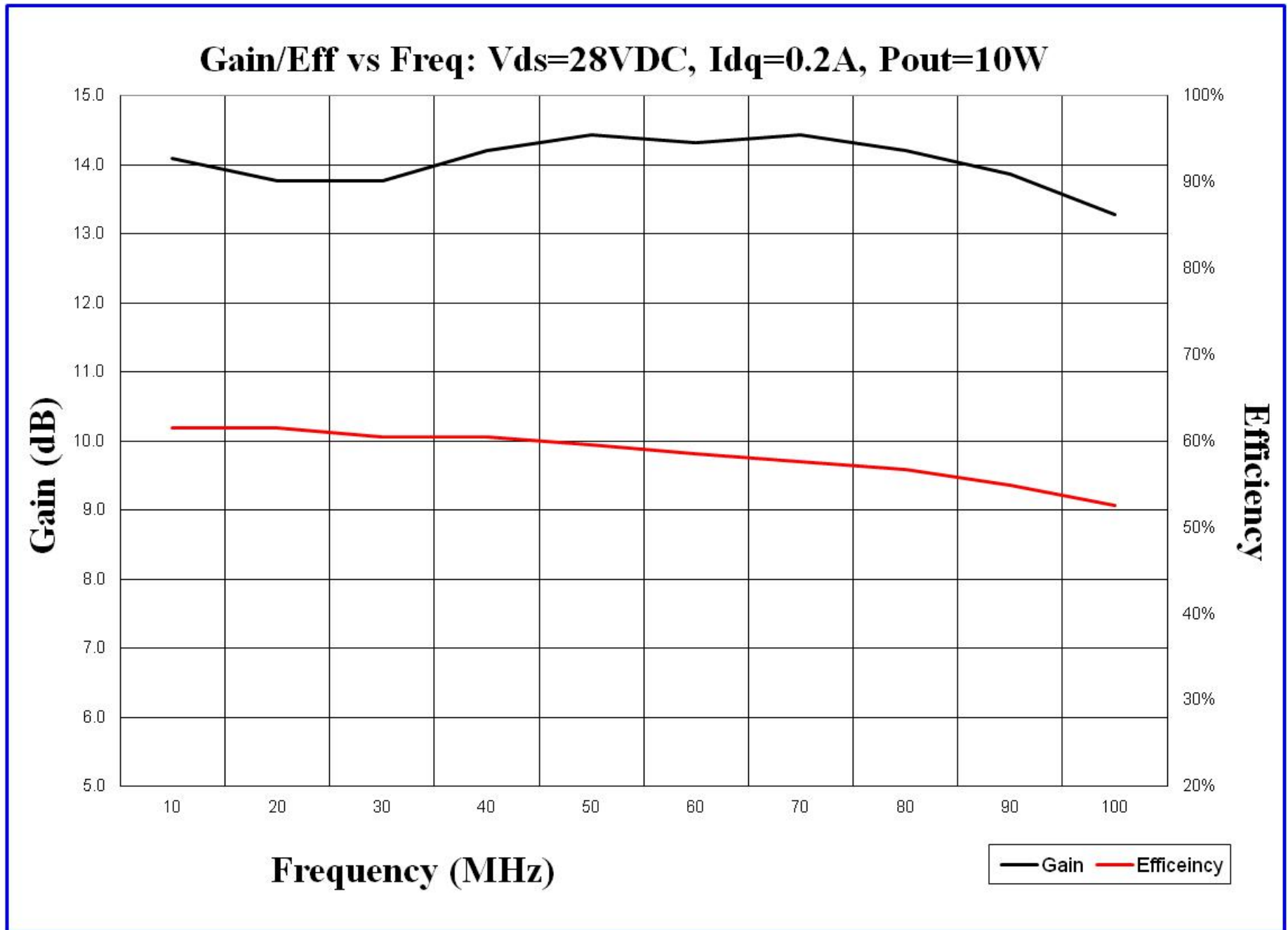
Vds=28Vdc

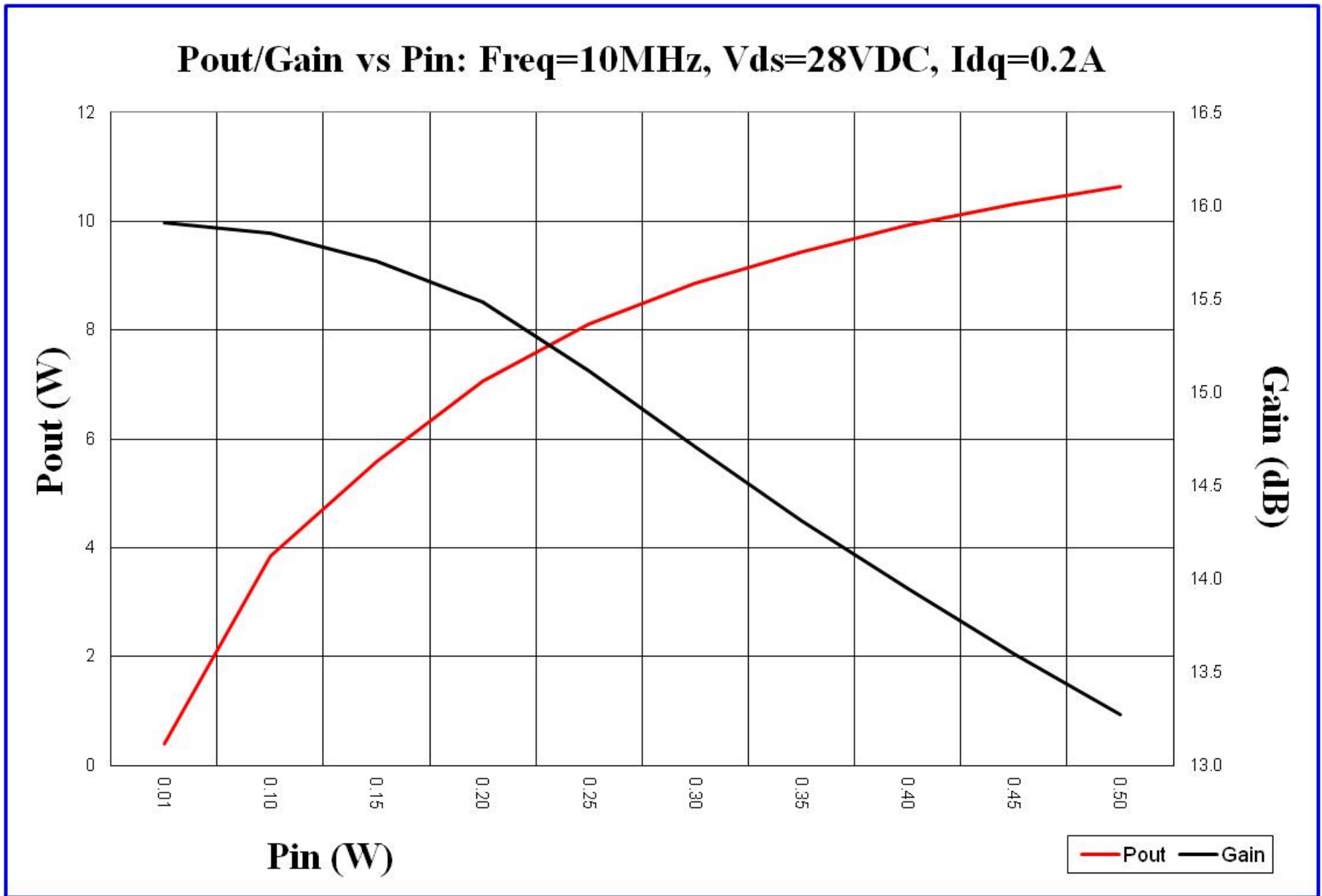
Idq=0.2A

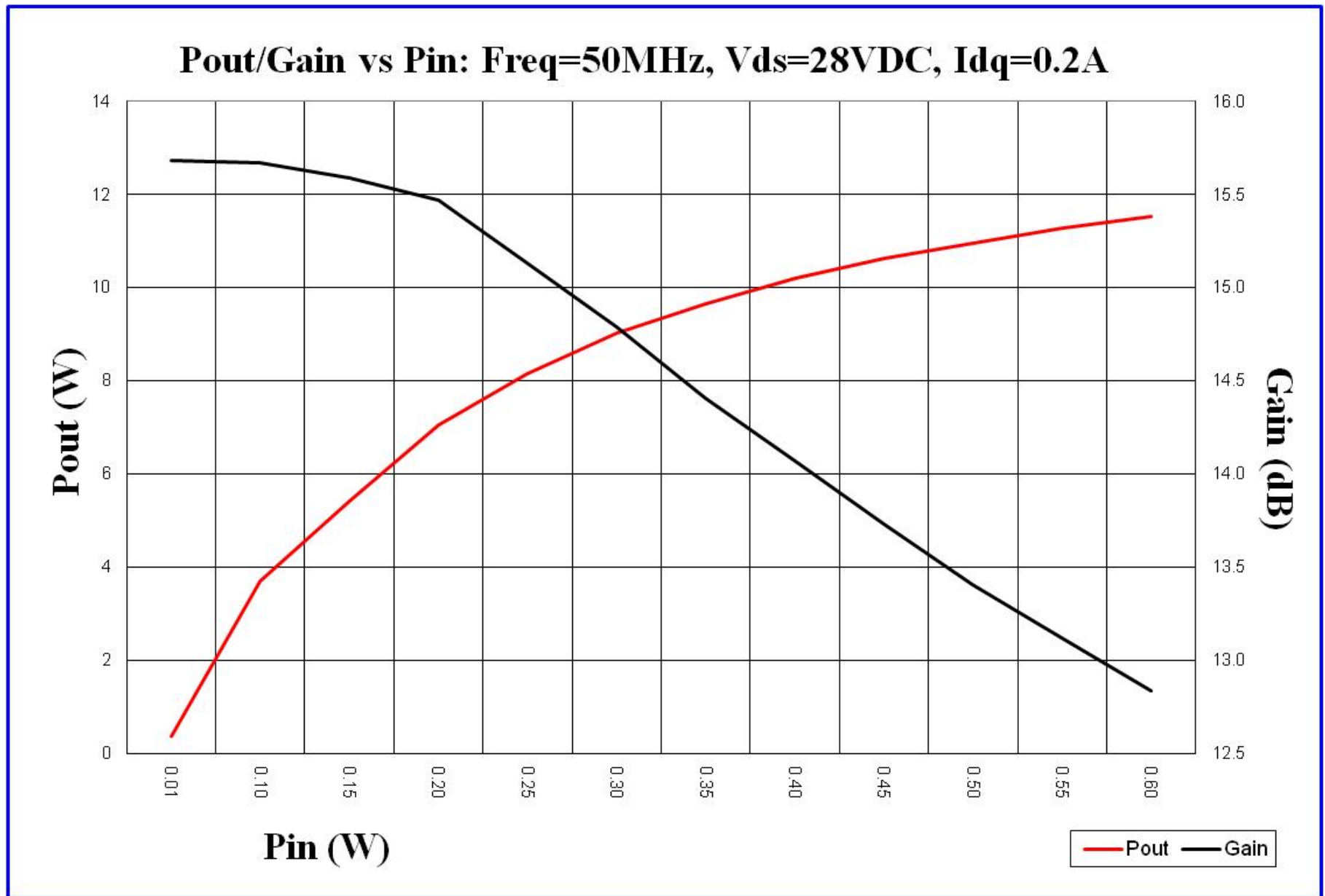
Efficiency=55% Typical

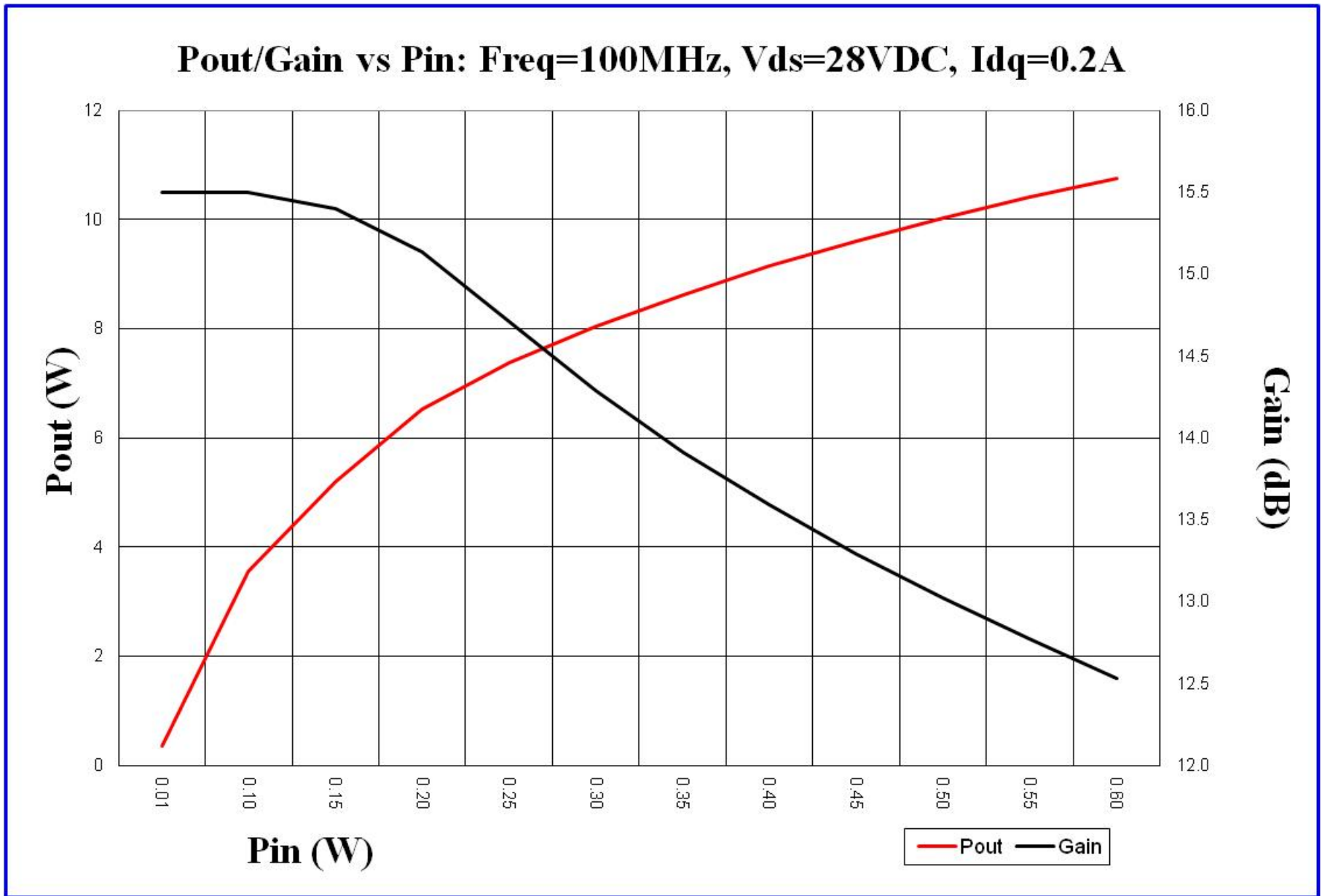
LP801

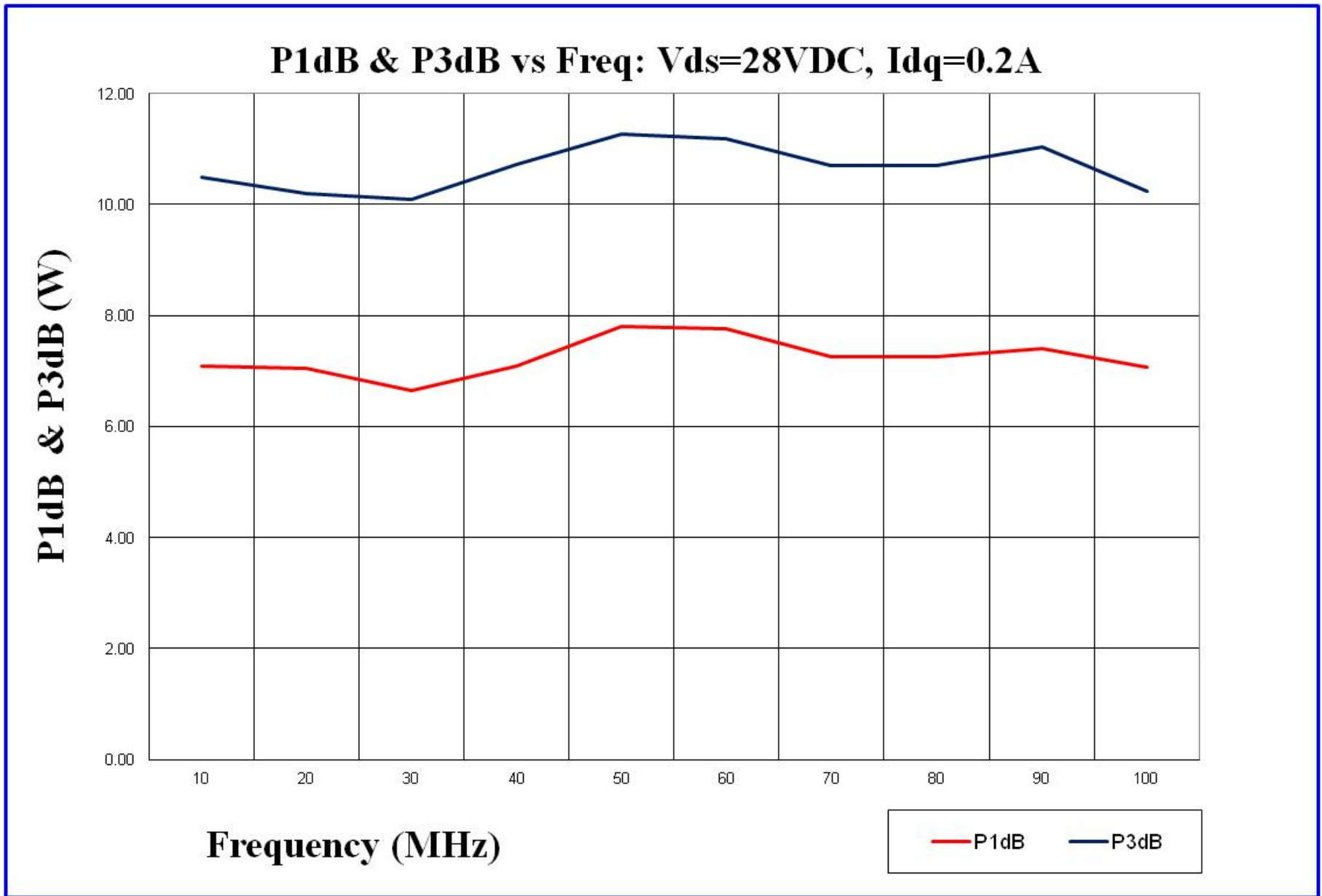


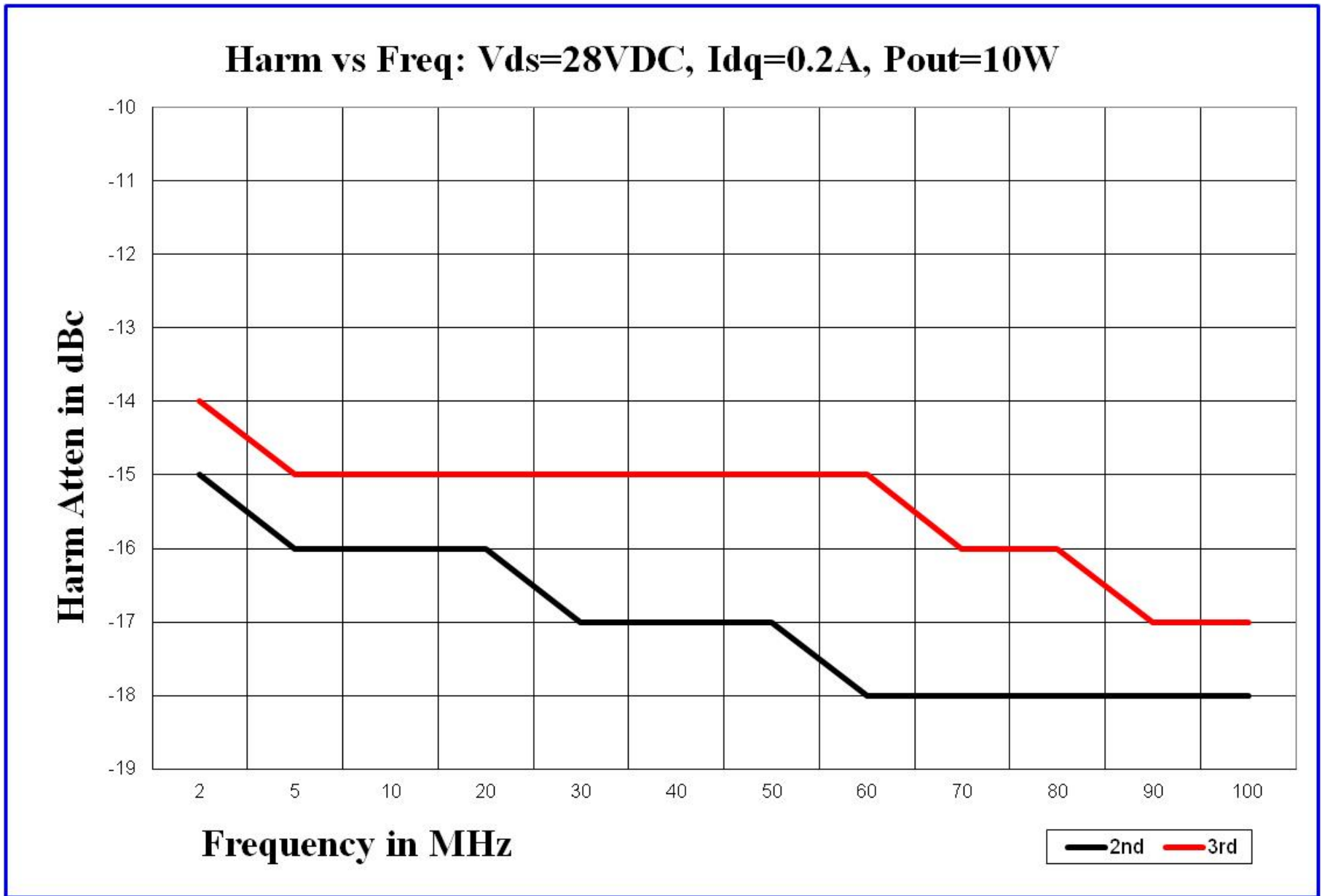


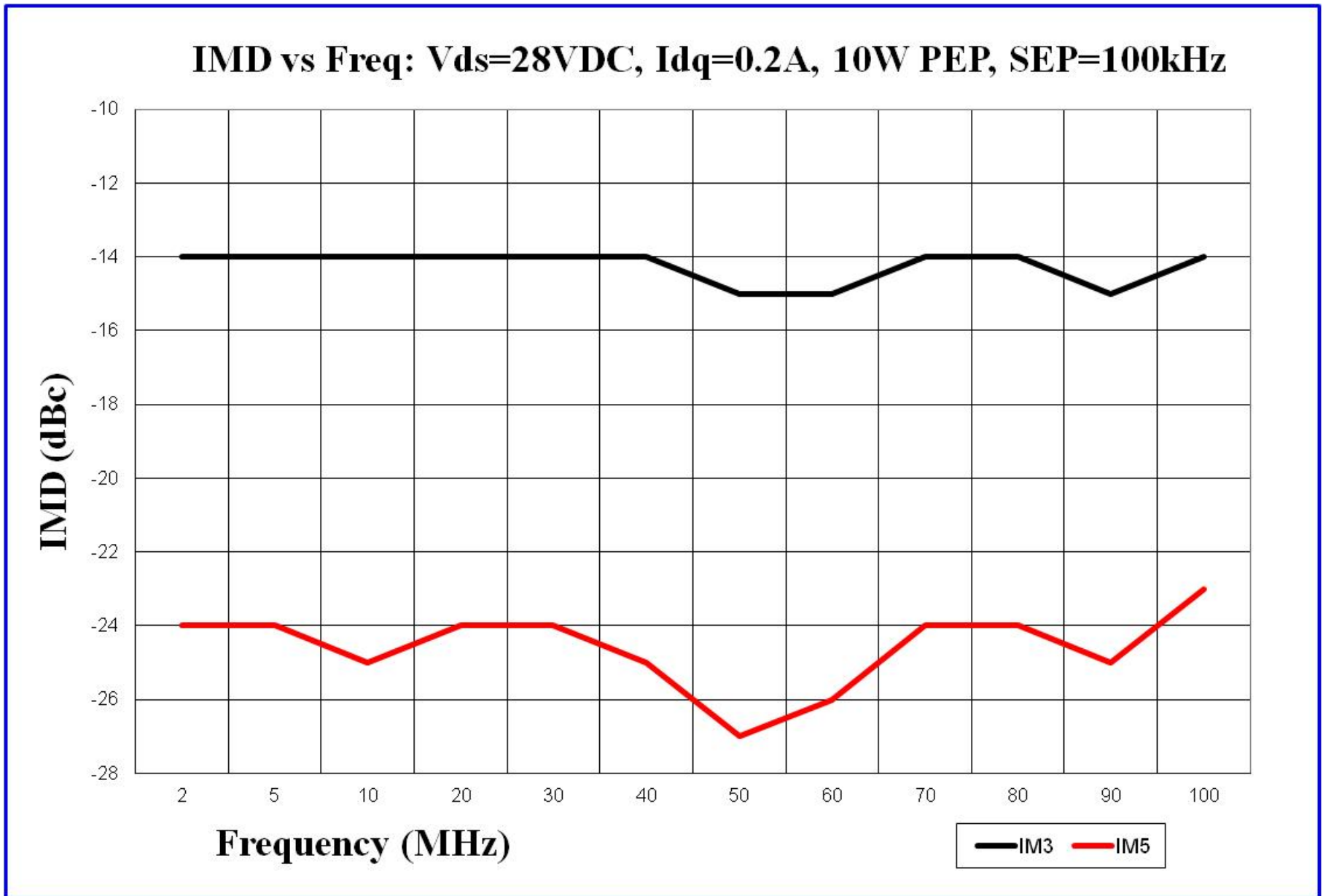


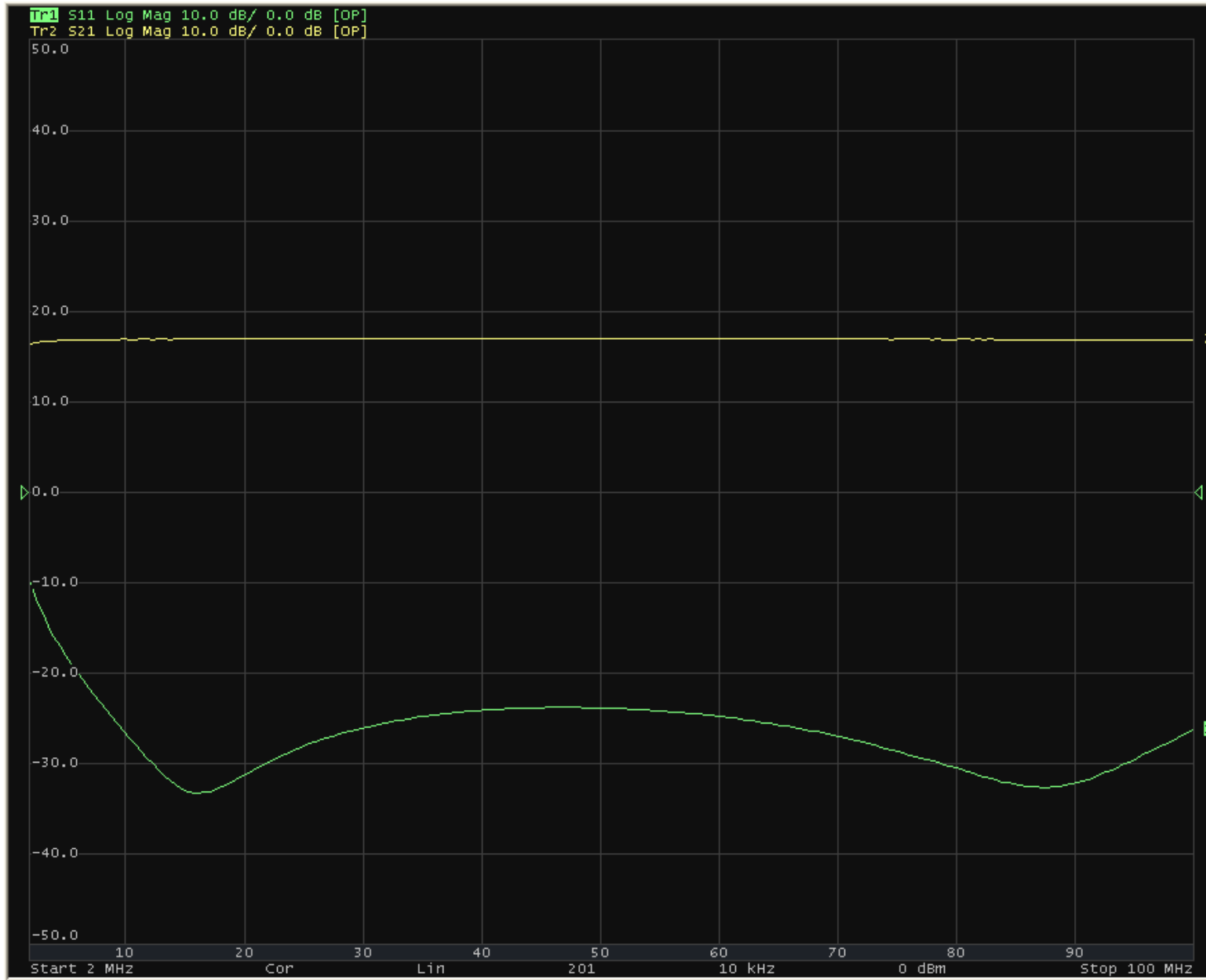




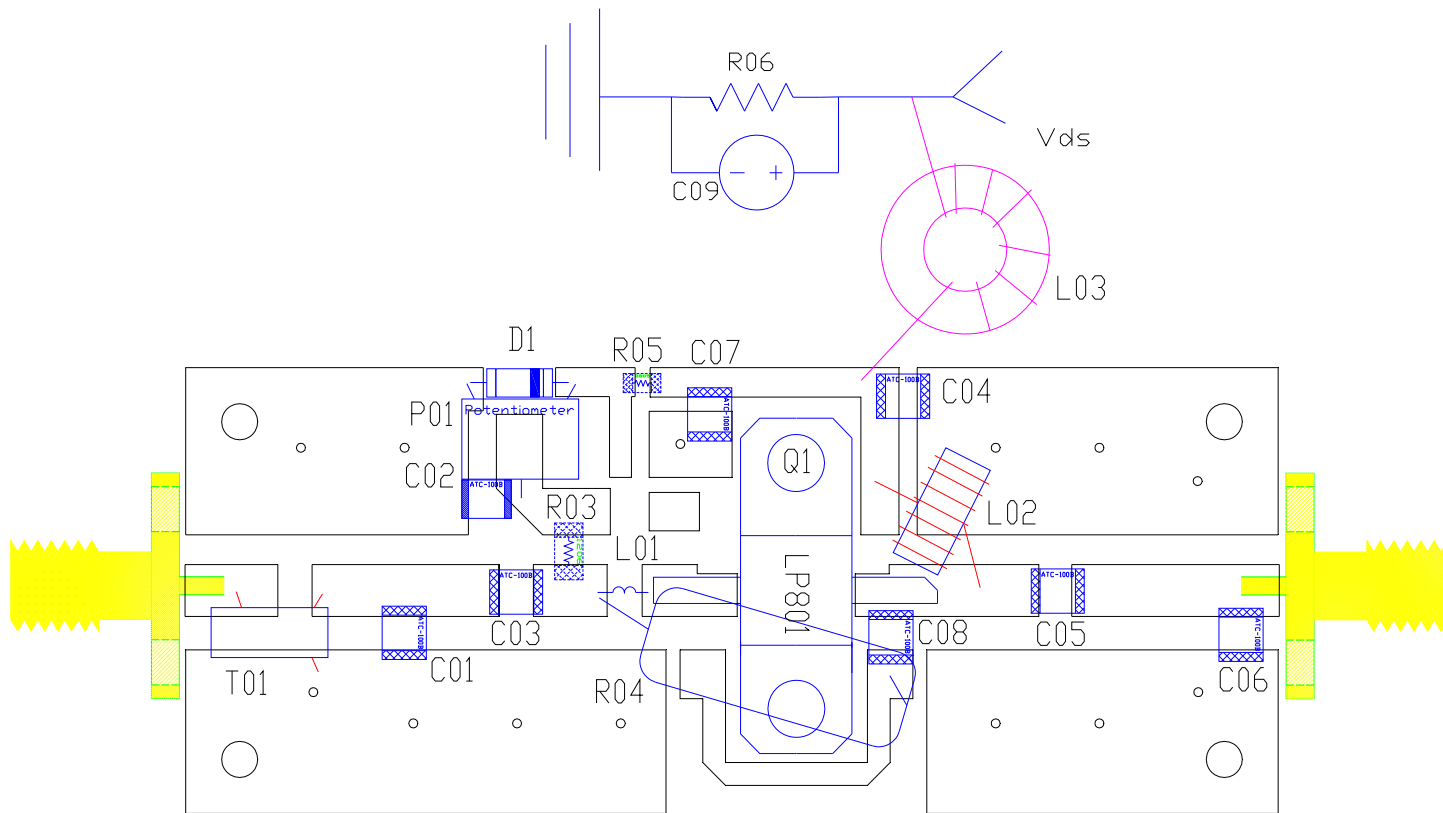








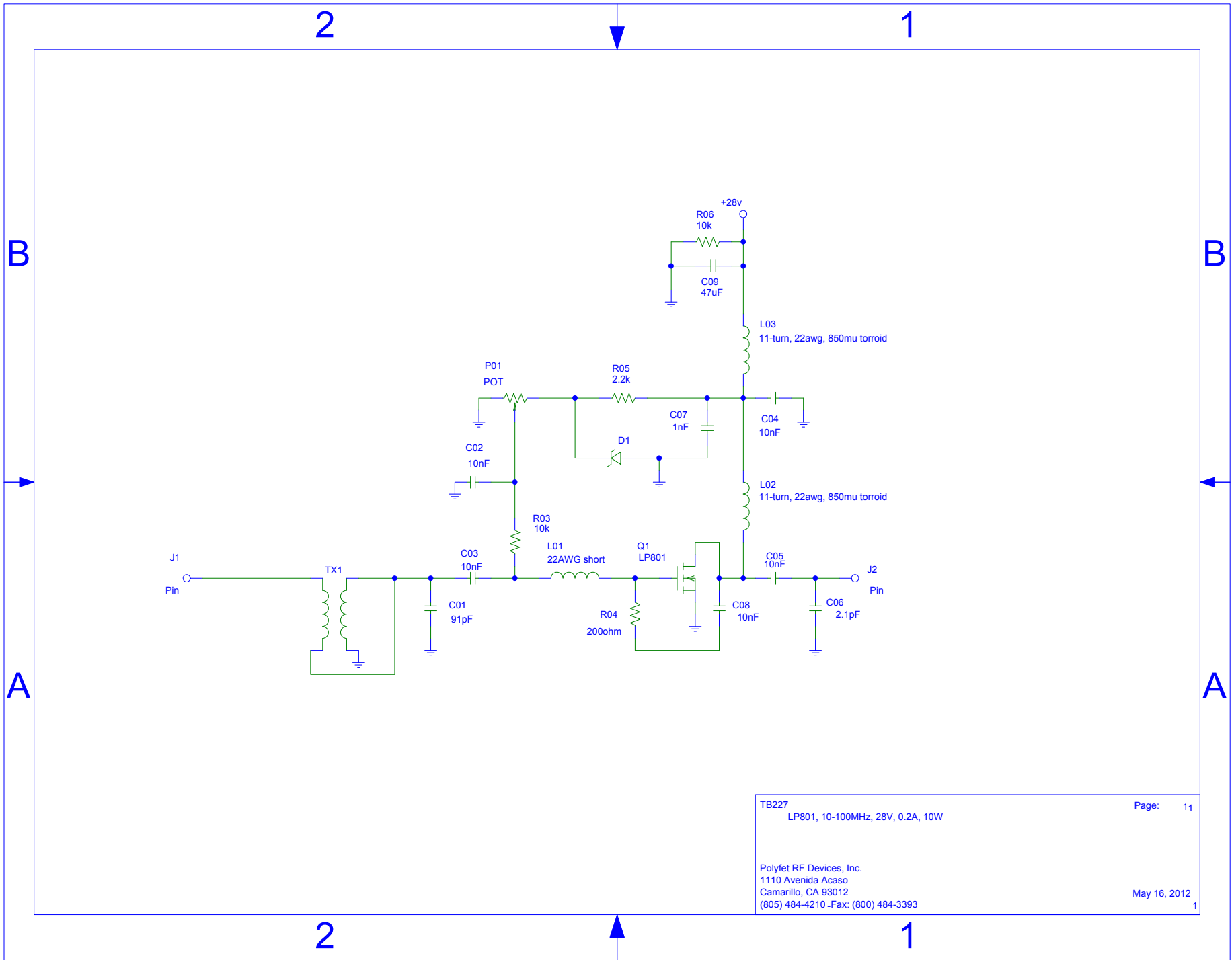
Vds=28VDC, Idq=0.2A, Pin=0dBm



DRN BY	Edwin Cunningham	11/21/13	Polyfet RF Devices		
CHKD			LP801 10-100MHz		
ELECT	Edwin Cunningham	11/18/13			
MECH	Edwin Cunningham	11/13/13			
PRDC			SIZE	SCALE	TB227 LAYOUT
QUAL				1:1	
PGMS					REV 0

(Polyfet PCHA115A)

NOMENCLATURE	DESCRIPTION	VENDER	VENDER PART #
C01	CAP 91pF 1111N Passive Plus	Passive Plus	1111N910GW501X
C06	CAP 2.1pF 1111N Passive Plus	Passive Plus	1111N2R1GW501X
C02,C03,C04,C05,C08	CAP 10nF 1111X Passive Plus	Passive Plus	1111X103KW500
C07	CAP 1nF 1111N Passive Plus	Passive Plus	1111N102GW500
C09	CAP 47uF 100V	DIGIKEY	P5312-ND
T01	22AWG twisted pair 9X through FT-37-43	AMIDON	FT-37-43
L01 Wire	short 22AWG	--	--
L02	22AWG 11x through FT-37-43	AMIDON	FT-37-43
L03	22AWG 11x through FT-50-43	AMIDON	FT-50-43
R03	RES 10.0K OHM 1/8W 1% 0805 SMD	DIGIKEY	311-10.0KCRCT-ND
R04	RES 200 OHM 2W Axial	DIGIKEY	200W-2-ND
R05	RES 2.2K OHM 1/8W 1% 0805 SMD	DIGIKEY	P2.2KADCT-ND
R06	RES 9.09K OHM 1/4W Axial DIGIKEY		RNF14FTD9K09CT-ND
P01	Bourns POT 10KOHM	Mouser 652-326	9W-1- 103GLF
D1	6.2V Zener 500mW	DIGIKEY ZMM5234BDI	CT-ND
Q1	LDMOS	Polyfet RF Devices	LP801
J1,J2	SMA Female; 4 Hole Panel Mount	Pasternack	PE4000-SF
PCB	Double Side FR4 30mil 1oz copper	Taconic	FR4-FB650M



TB227
 LP801, 10-100MHz, 28V, 0.2A, 10W

Page: 11

Polyfet RF Devices, Inc.
 1110 Avenida Acaso
 Camarillo, CA 93012
 (805) 484-4210 - Fax: (800) 484-3393

May 16, 2012

1