

TB230

Frequency = 20-1000MHz

Pout = 100W

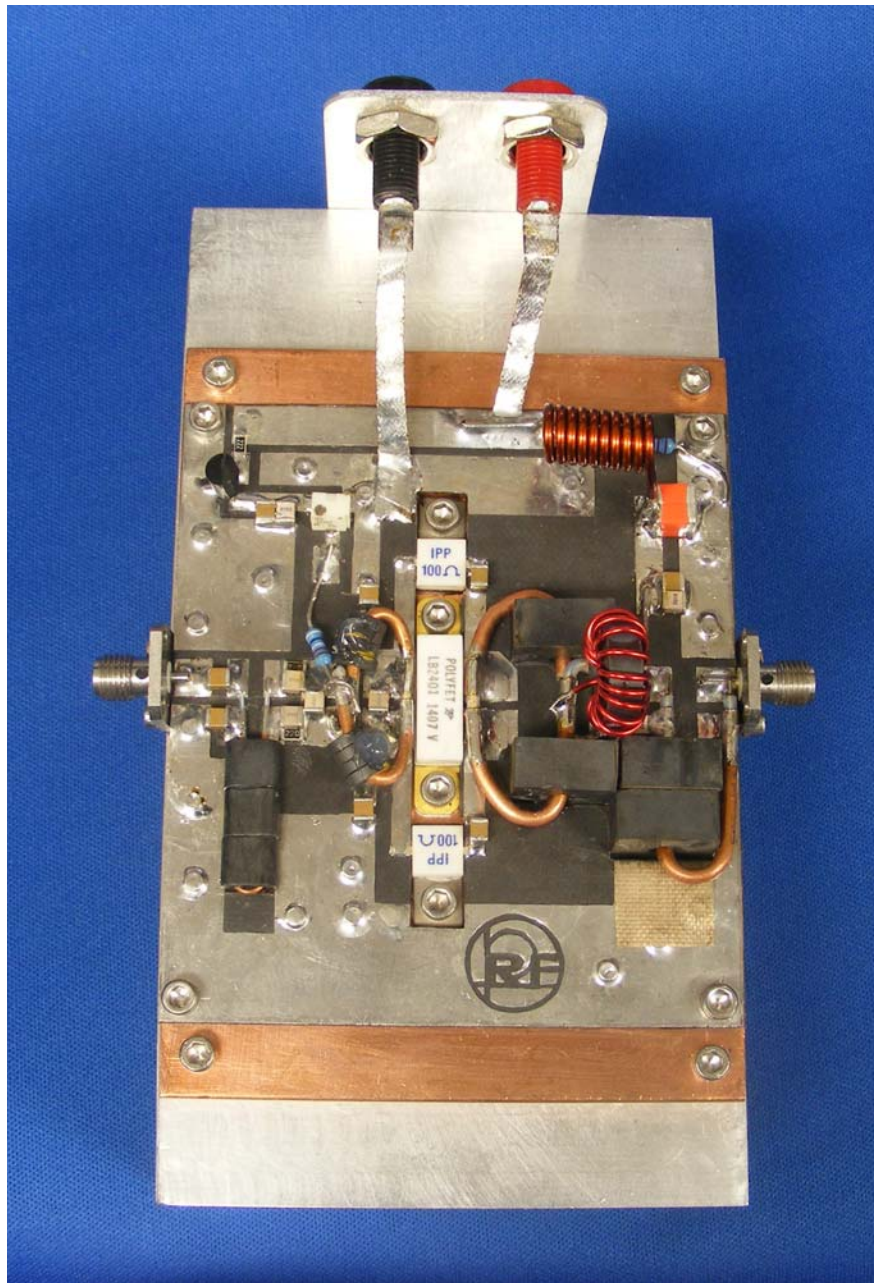
Gain = 15dB Typical

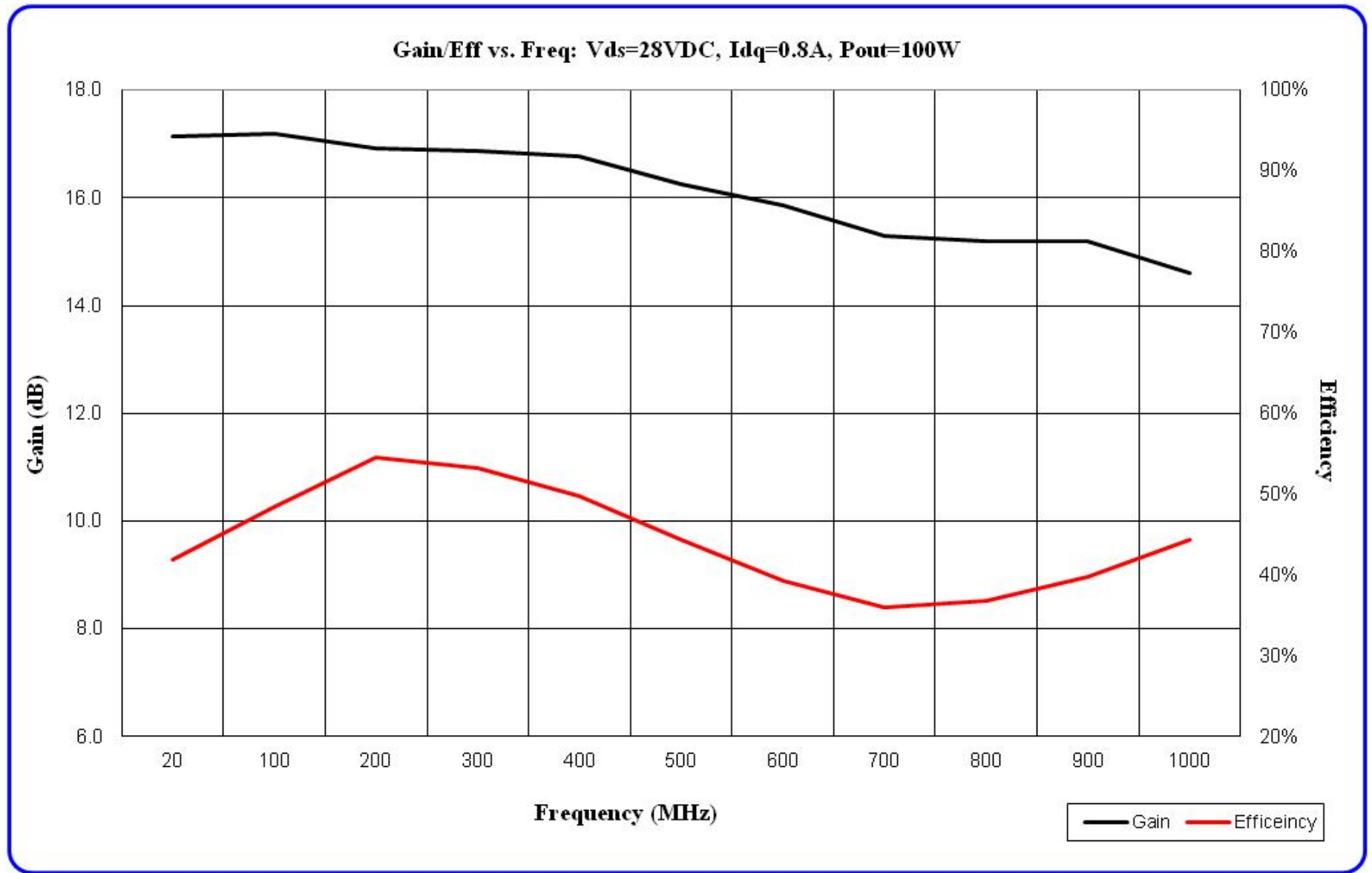
Vds = 28Vdc

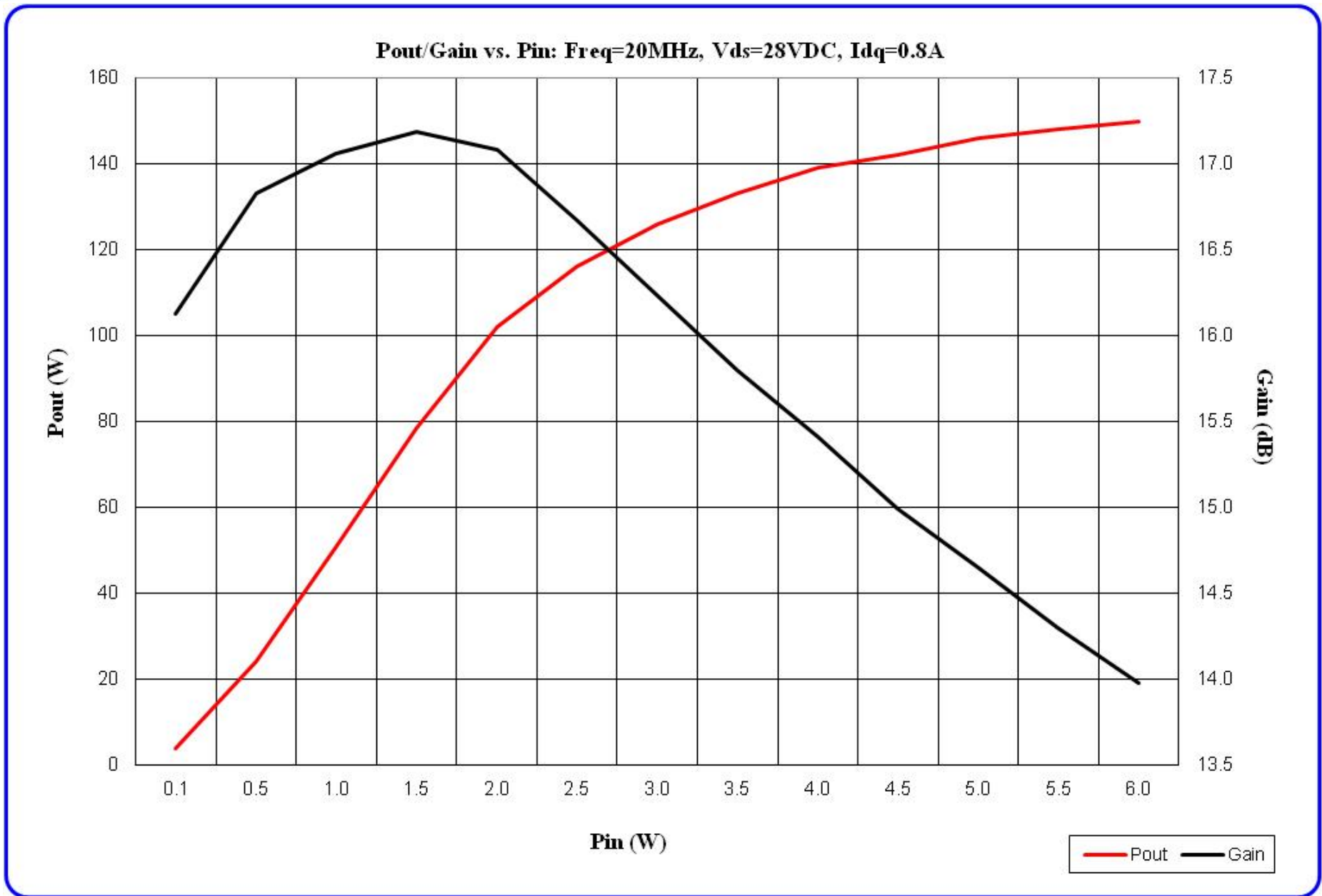
Idq = 0.8A

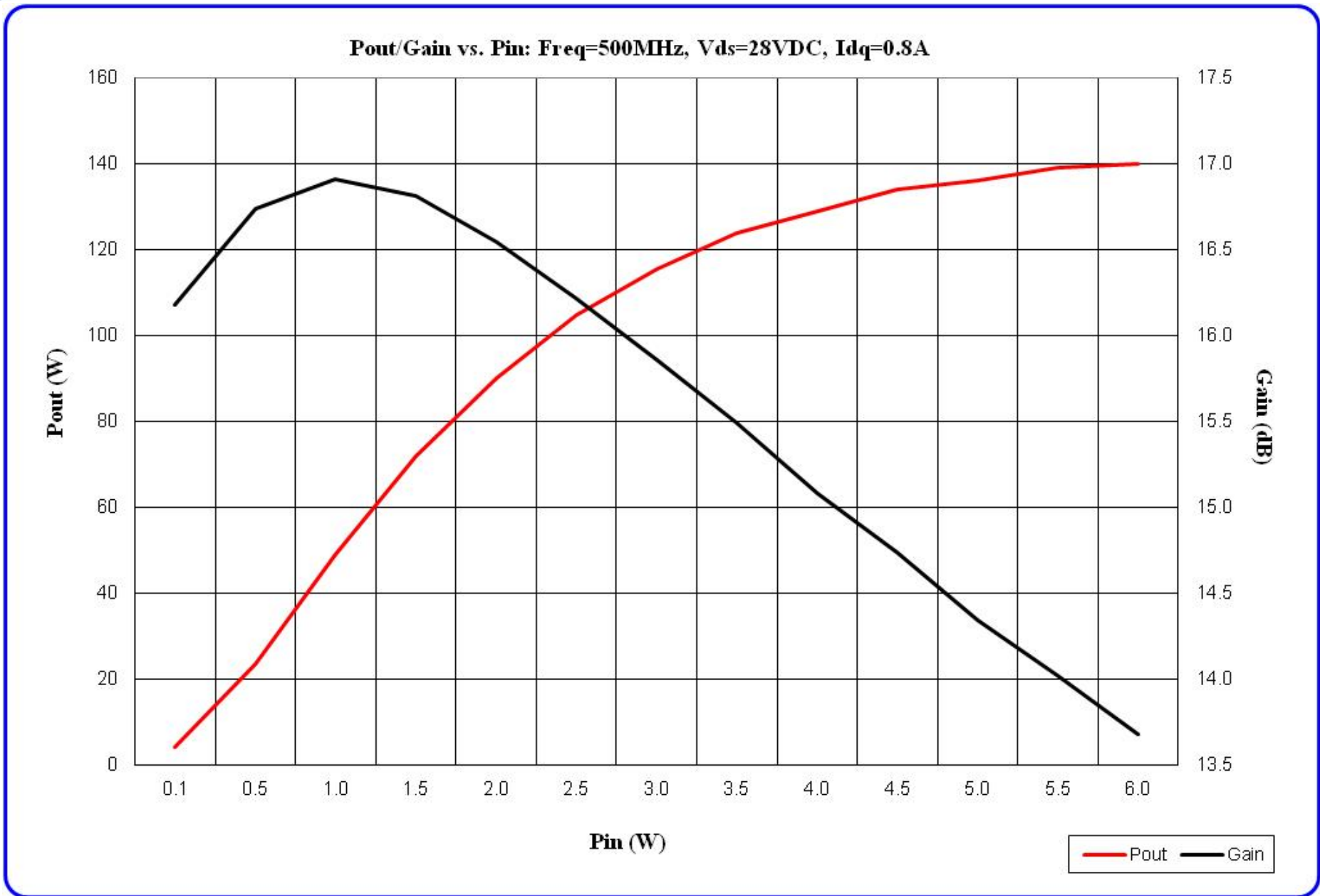
Efficiency = 30-50%

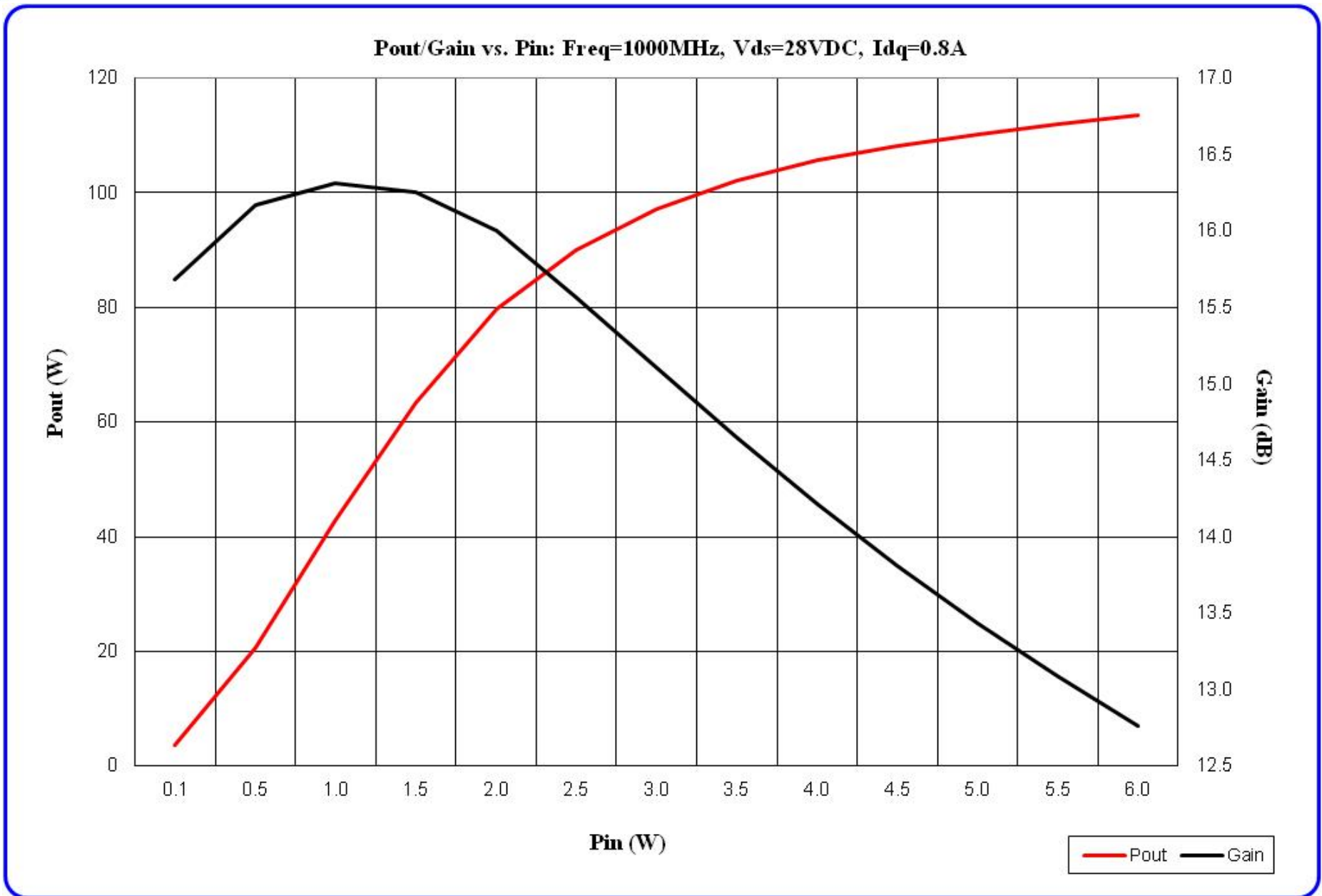
LB2401

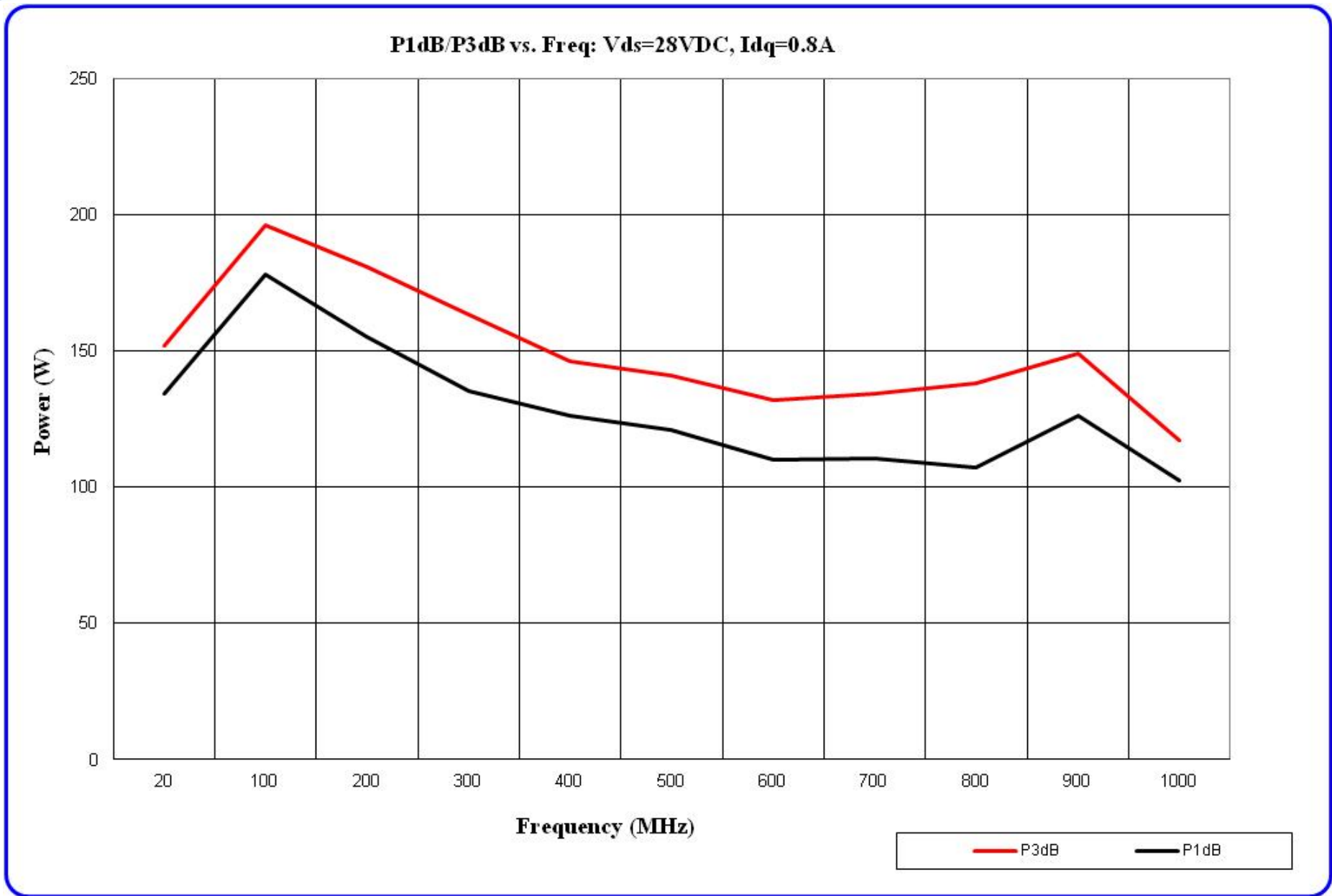


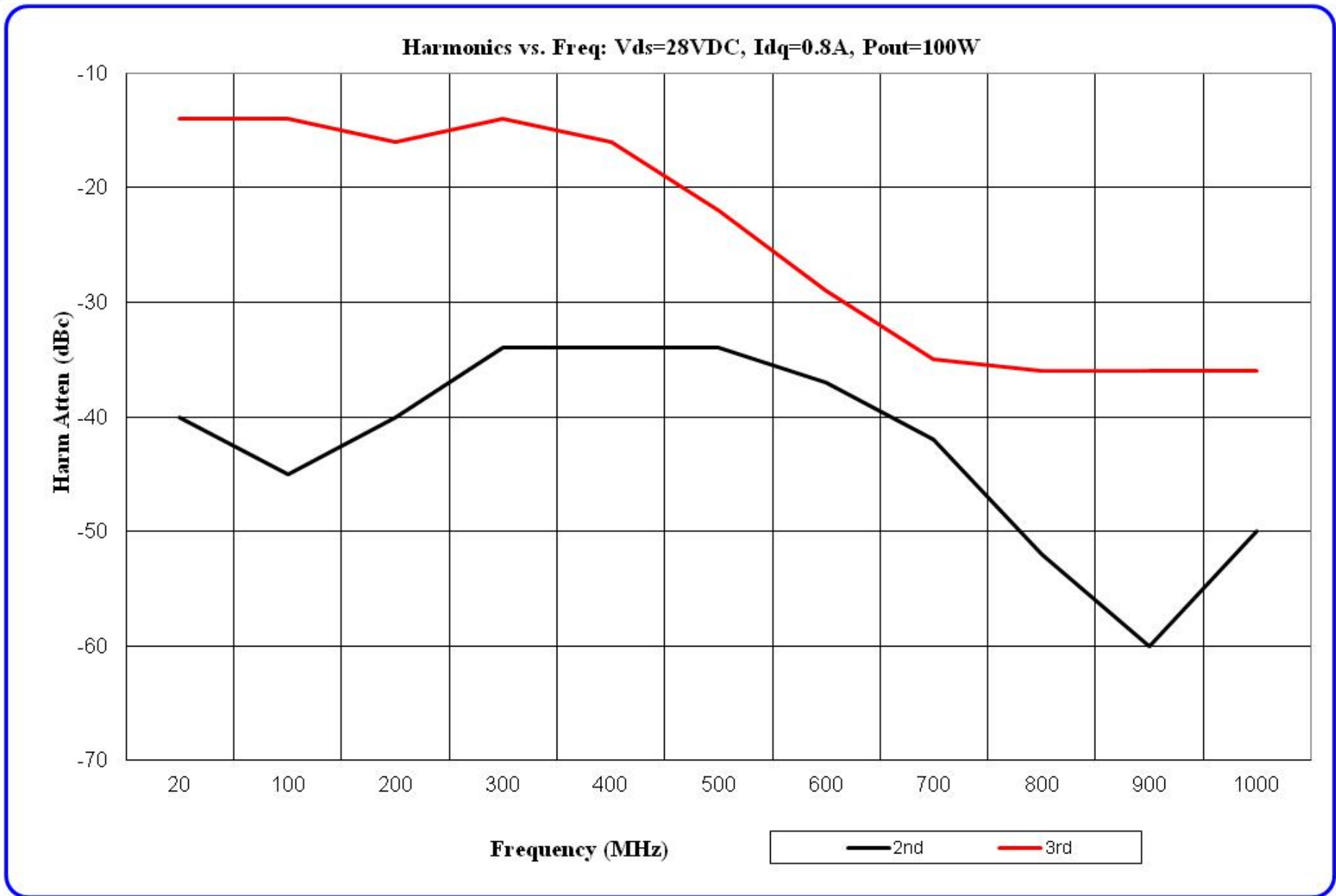


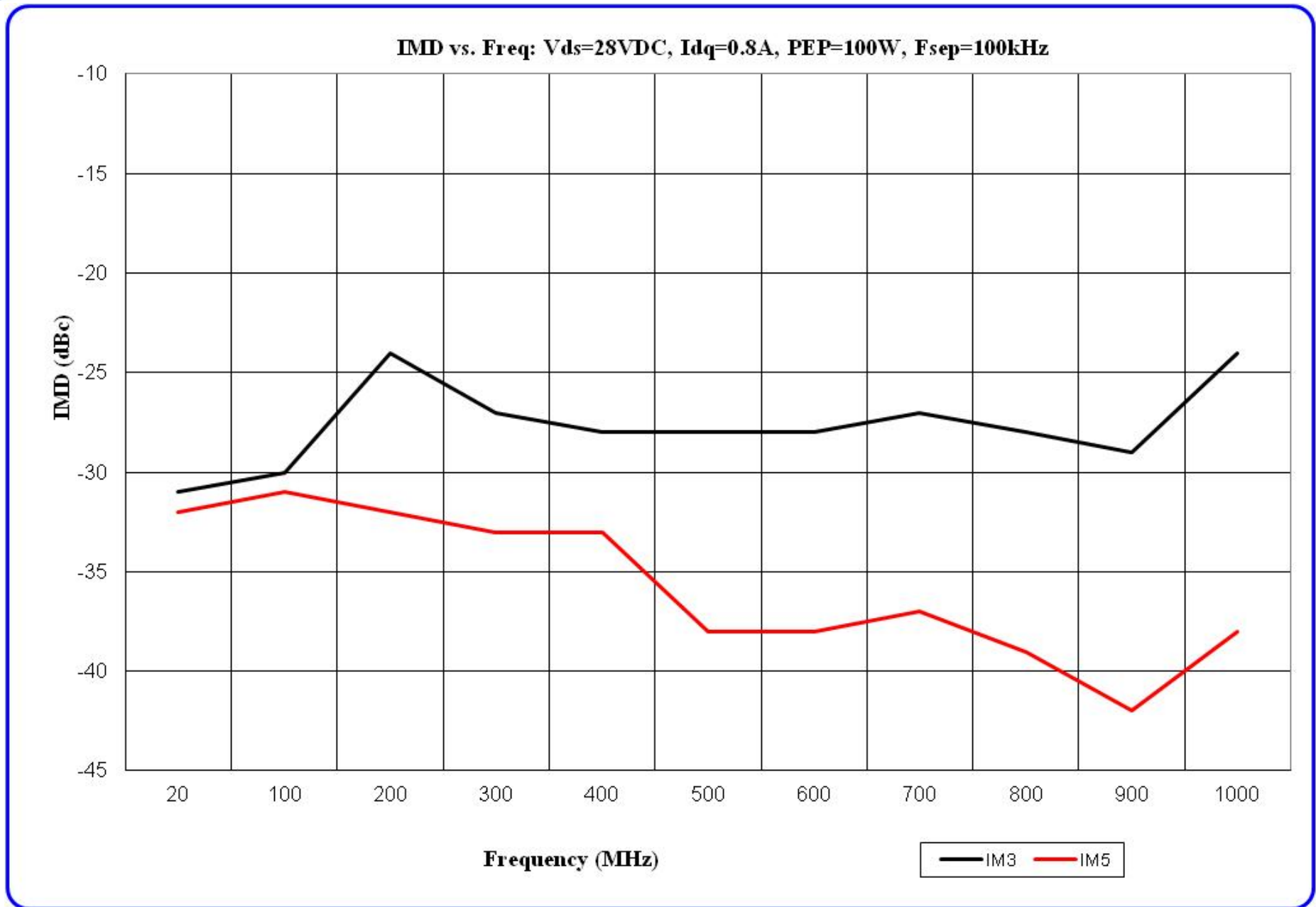


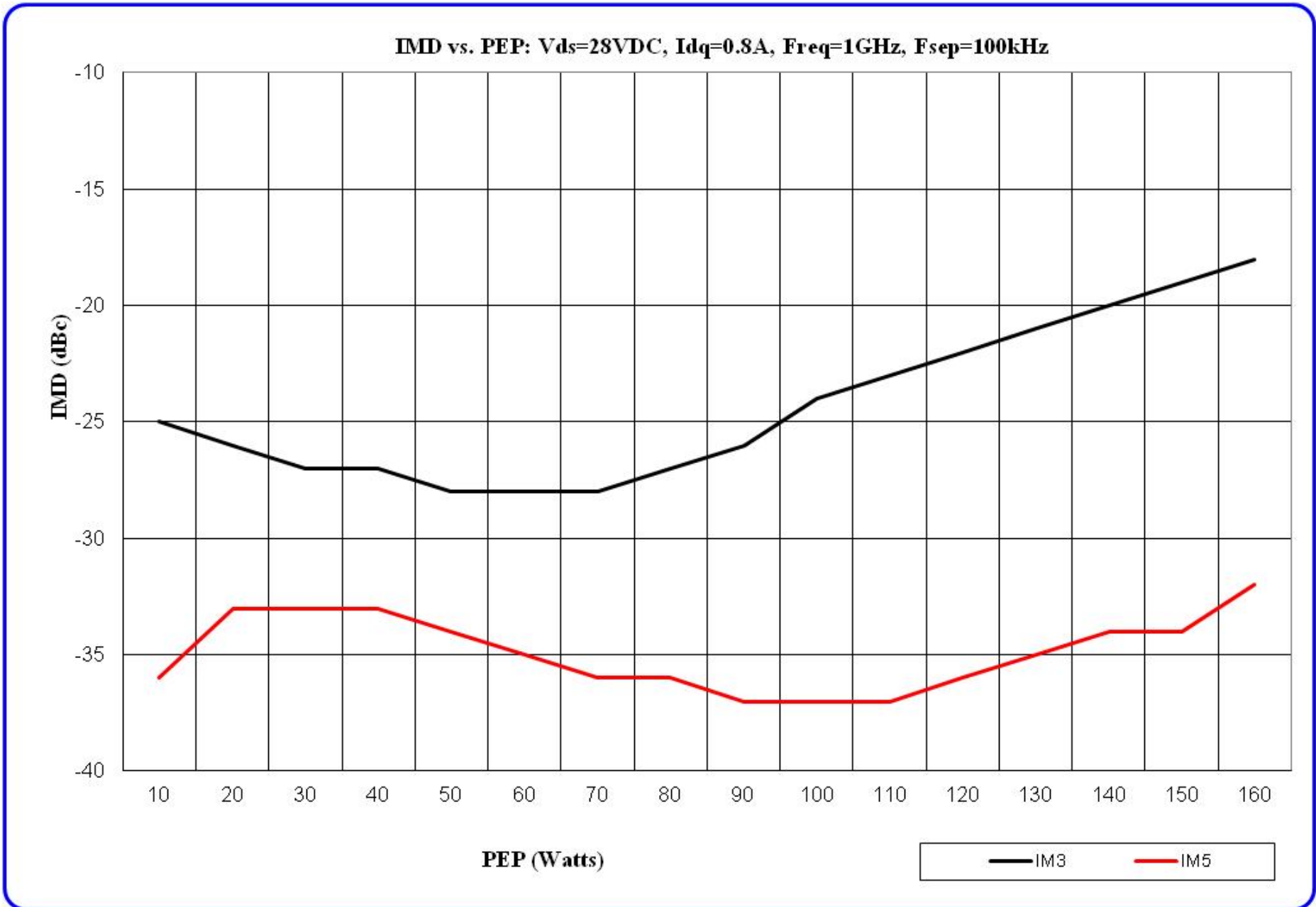


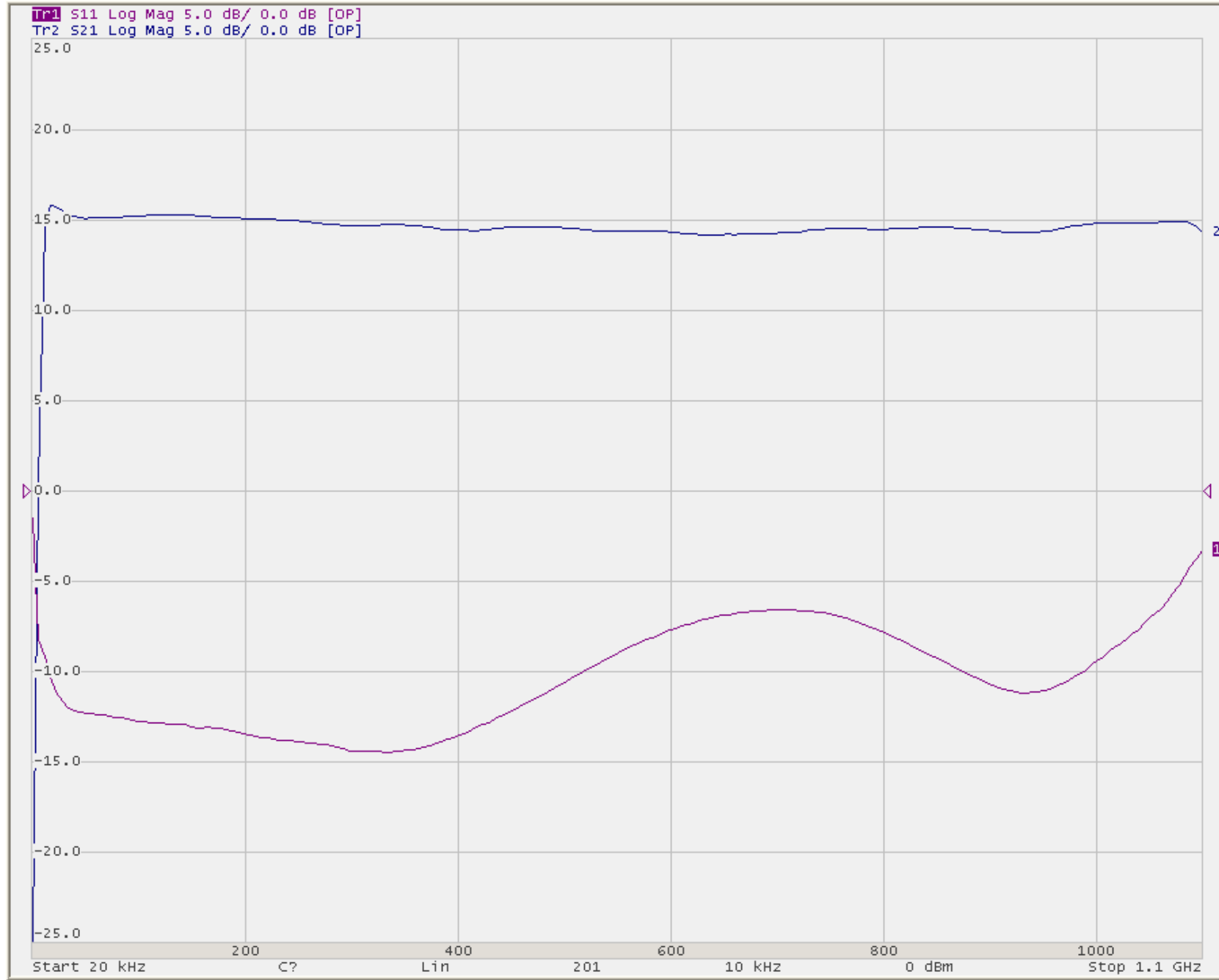




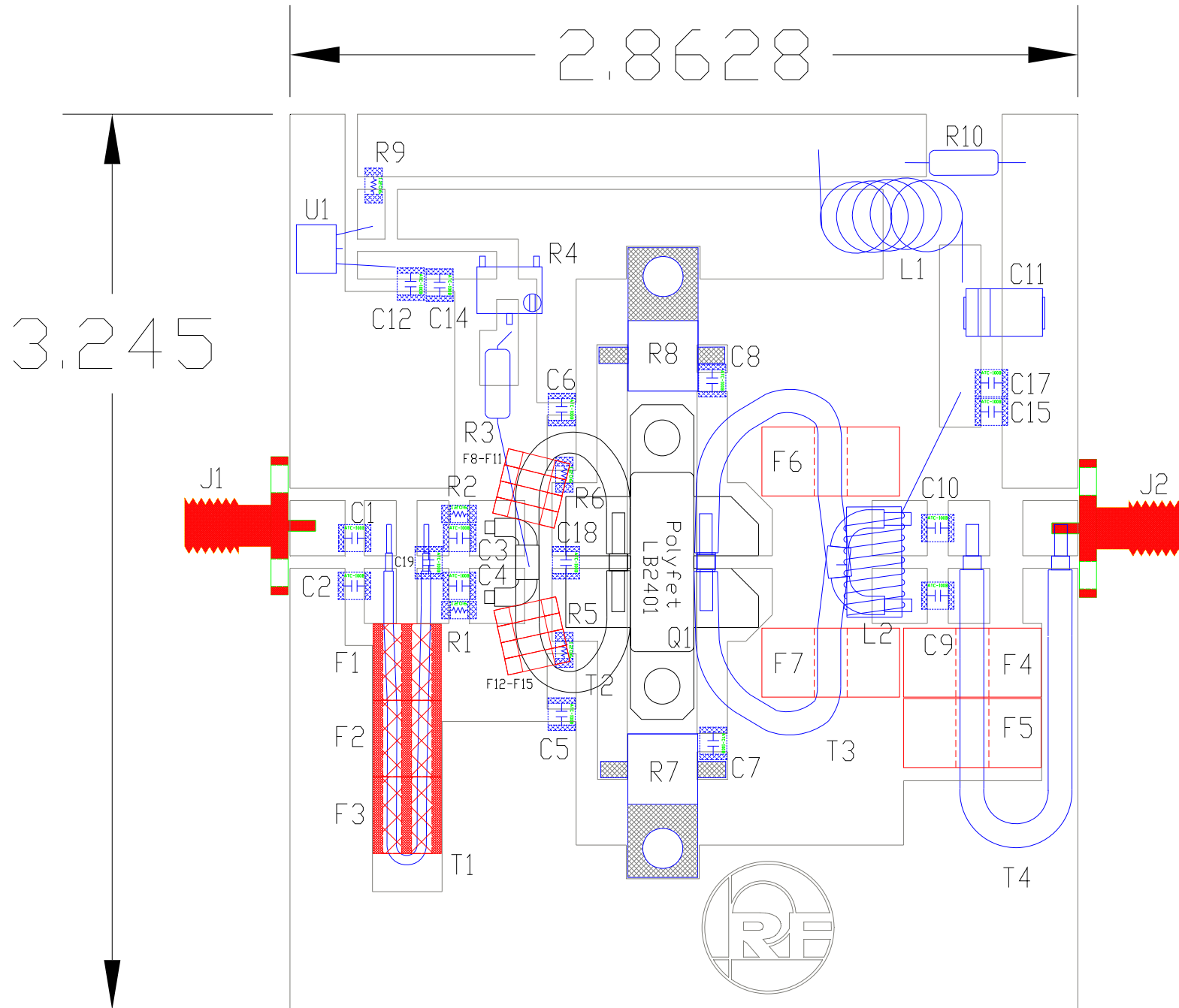






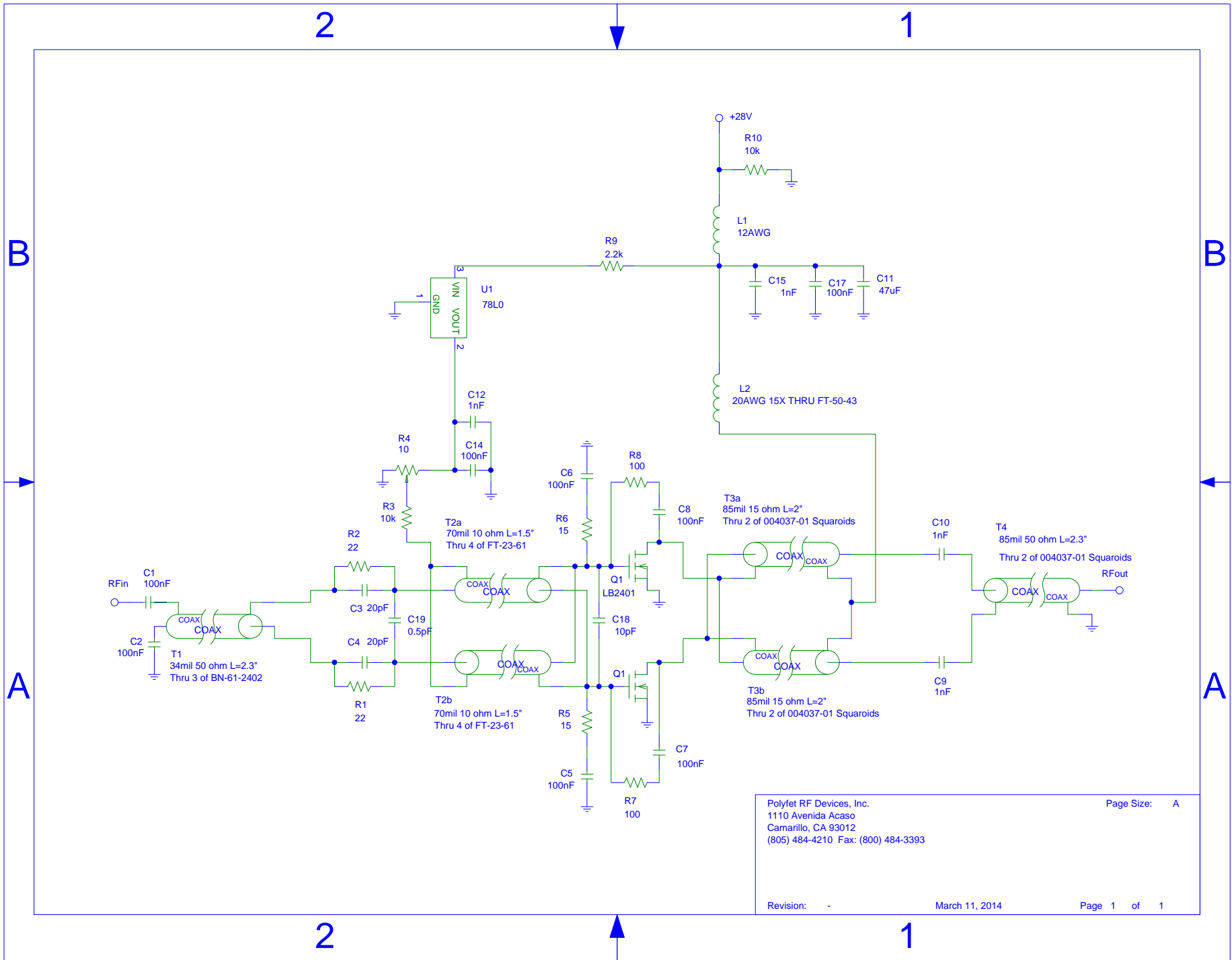


TB230 28V 0.8A 0dBm



Polyfet TB230

| NOMENCLATURE | DESCRIPTION | VENDER | PART # |
|---------------------|---|---------------------------------|----------------------|
| C1,C2,C5-C8,C12,C17 | 100nF 0.11"X0.11" CAPACITOR | PASSIVE PLUS | 1111X104KW5000 |
| C3,C4 | 20pF 0.11"X0.11" CAPACITOR | PASSIVE PLUS | 1111N200GW501X |
| C9,C10,C14,C15 | 1nF 0.11"X0.11" CAPACITOR | PASSIVE PLUS | 1111N102KW501X |
| C11 | 47uF 50V VISHAY TANTALUM CAPACITOR | MOUSER | 71-597D476X0050Z2T |
| C18 | 10pF 0.11"X0.11" CAPACITOR | PASSIVE PLUS | 1111N100GW501X |
| C19 | 0.5pF 0.11"X0.11" CAPACITOR | PASSIVE PLUS | 1111N0R5GW501X |
| F1,F2,F3 | 125u BINOCULAR FERRITE | AMIDON | BN-61-2402 |
| F4,F5,F6,F7 | 100u "SQUAREOID" FERRITE | CERAMIC MAGNETICS | 4000-1-250-C2050-SIN |
| F8-F15 | 125u TORROID FERRITE | AMIDON | FT-23-61 |
| F16 | 850u TORROID FERRITE | AMIDON | FT-50-43 |
| L1 | 16AWG air coil, 10X, ID:0.2" | - | - |
| L2 | 20AWG 15X THRU "F16" | - | - |
| R1,R2 | 22 OHM 1206 SMD RESISTOR | PANASONIC Electronic Components | ERJ-8GEYJ220V |
| R3,R10 | 10k OHM 1/4W RESISTOR | PANASONIC Electronic Components | ERD-S2TJ103V |
| R4 | 10k OHM 5MM POTENTIOMETER | MURATA ELECTRONICS | PVG5A103C03R00 |
| R5,R6 | 15 OHM 1206 SMD RESISTOR | VISHAY DALE | CRCW120615R0FKEAHP |
| R7,R8 | 100 OHM FLANGE MOUNT RESISTOR | INNOVATIVE POWER PRODUCTS | IPP-RB203-100 |
| R9 | 2.2k OHM 1206 SMD RESISTOR | PANASONIC Electronic Components | ERJ-8GEYJ222V |
| T1 | 34mils 50ohm coax L=2.3", through F1-F3 | AMAWAVE | UT-034 |
| T2 | 70mils 10ohm coax L=1.5", through F8-F15 | AMAWAVE | UT-070C-10 |
| T3 | 85mils 15ohm coax L=2", through F6 & F7 | AMAWAVE | UT-085C-15 |
| T4 | 85mils 50ohm coax L=2.3", through F4 & F5 | AMAWAVE | UT-085 |
| U1 | IC REG LDO 8V 0.1A TO92-3 | DIODES, INC | AP78L08VL-A |
| Q1 | LDMOS | POLYFET RF DEVICES, INC. | LB2401 |
| PCB | Dble Side TEFLON Er=2.33 30mil 2oz copper | | |
| | | | |
| | | | |



Polyfet RF Devices, Inc.
 1110 Avenida Acaso
 Camarillo, CA 93012
 (805) 484-4210 Fax: (800) 484-3393

Page Size: A

Revision: -

March 11, 2014

Page 1 of 1