

TB183D #2

Frequency=1.5-30MHz

Pout=300W

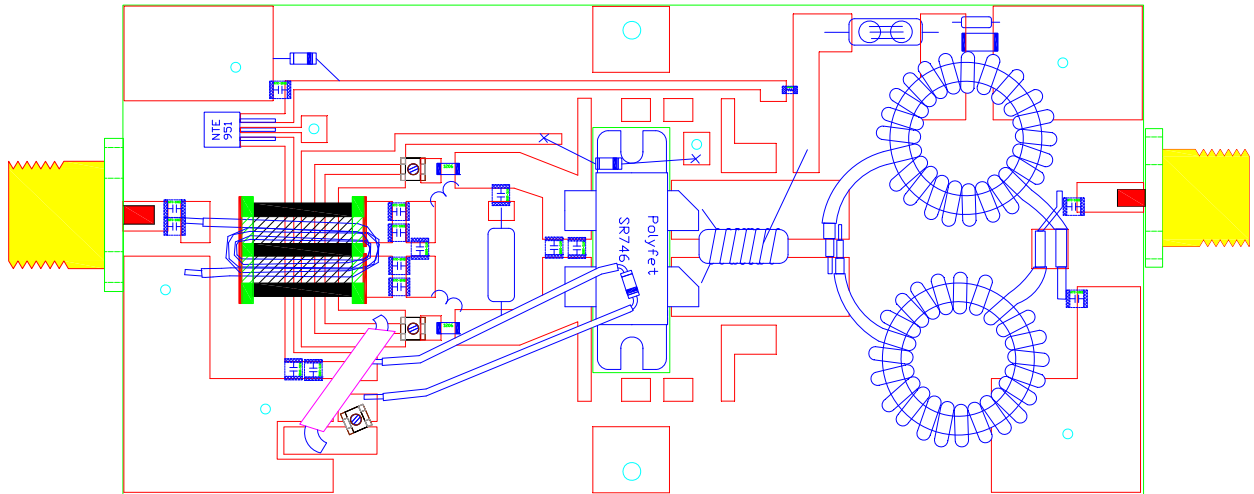
Gain=17dB

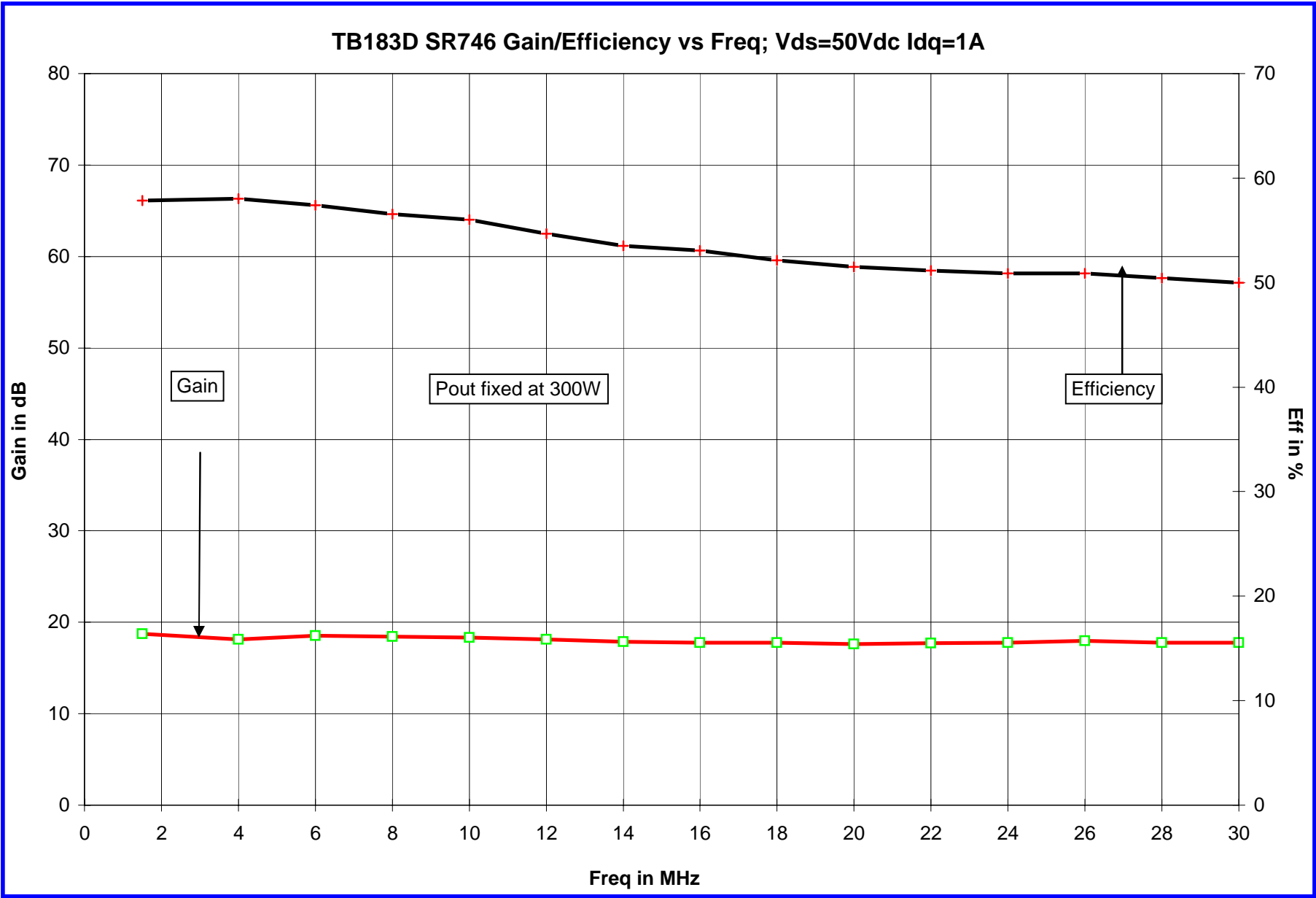
Vds=50Vdc

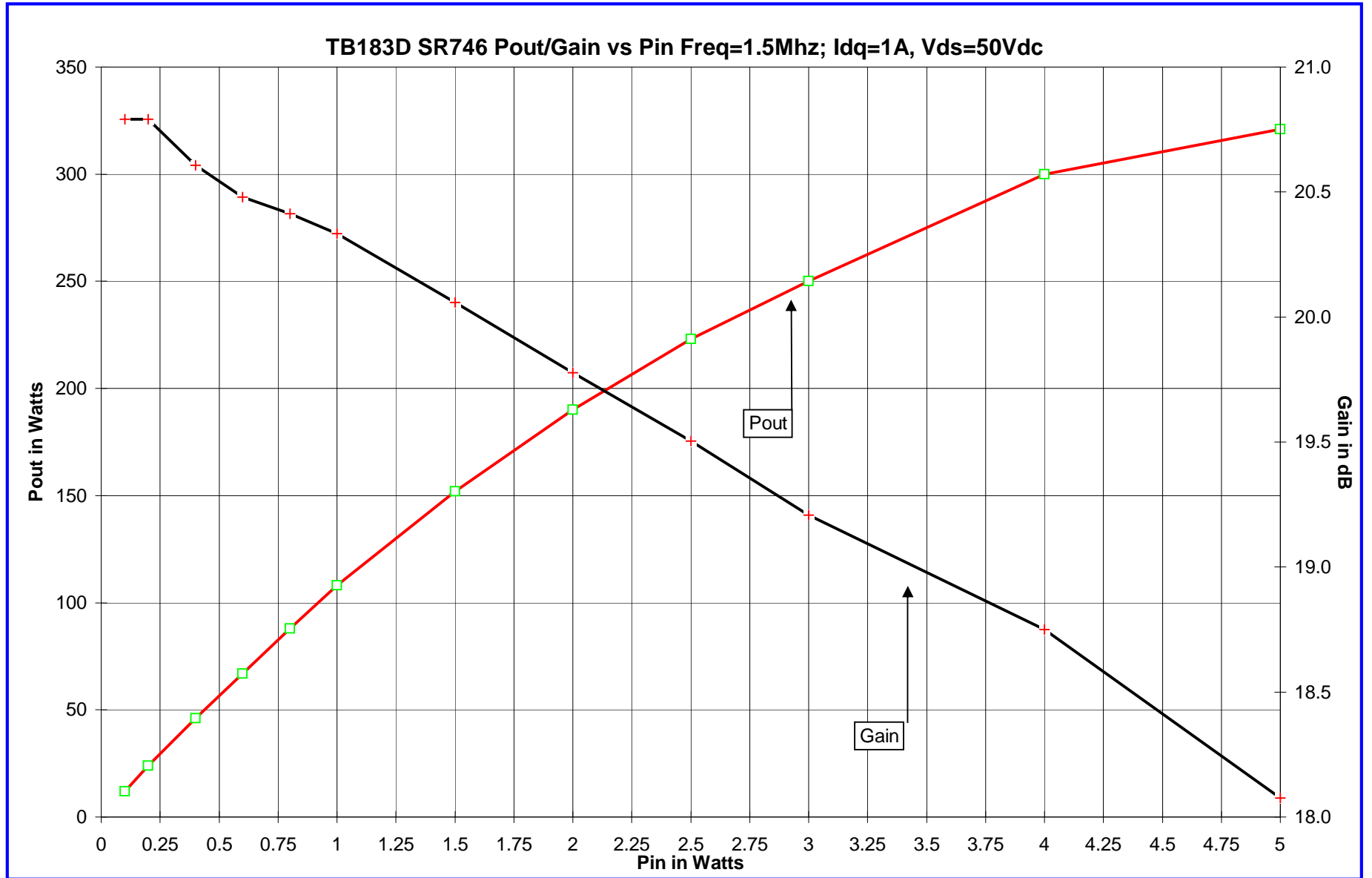
Idq=1.2A

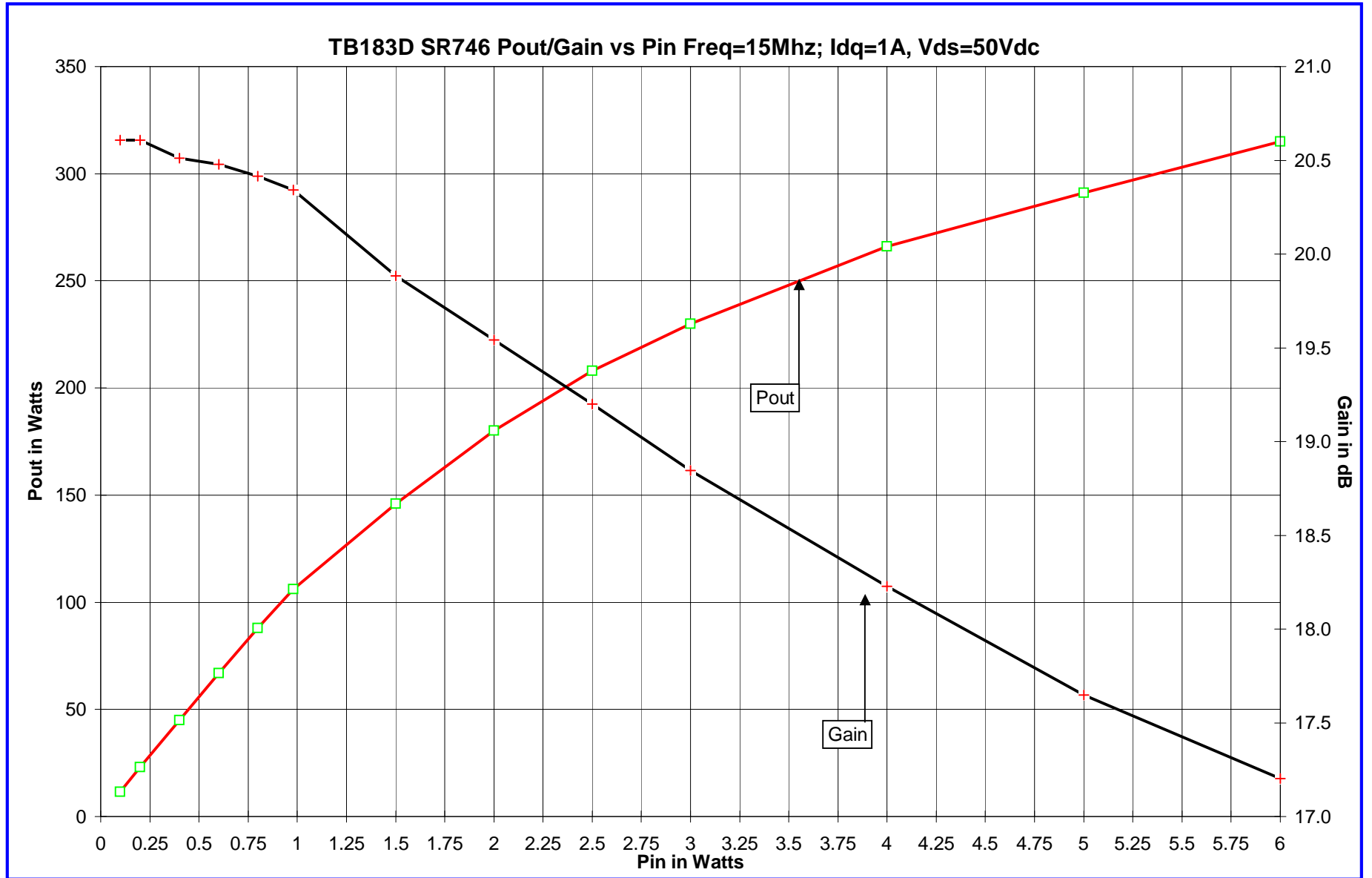
Efficiency= 50%

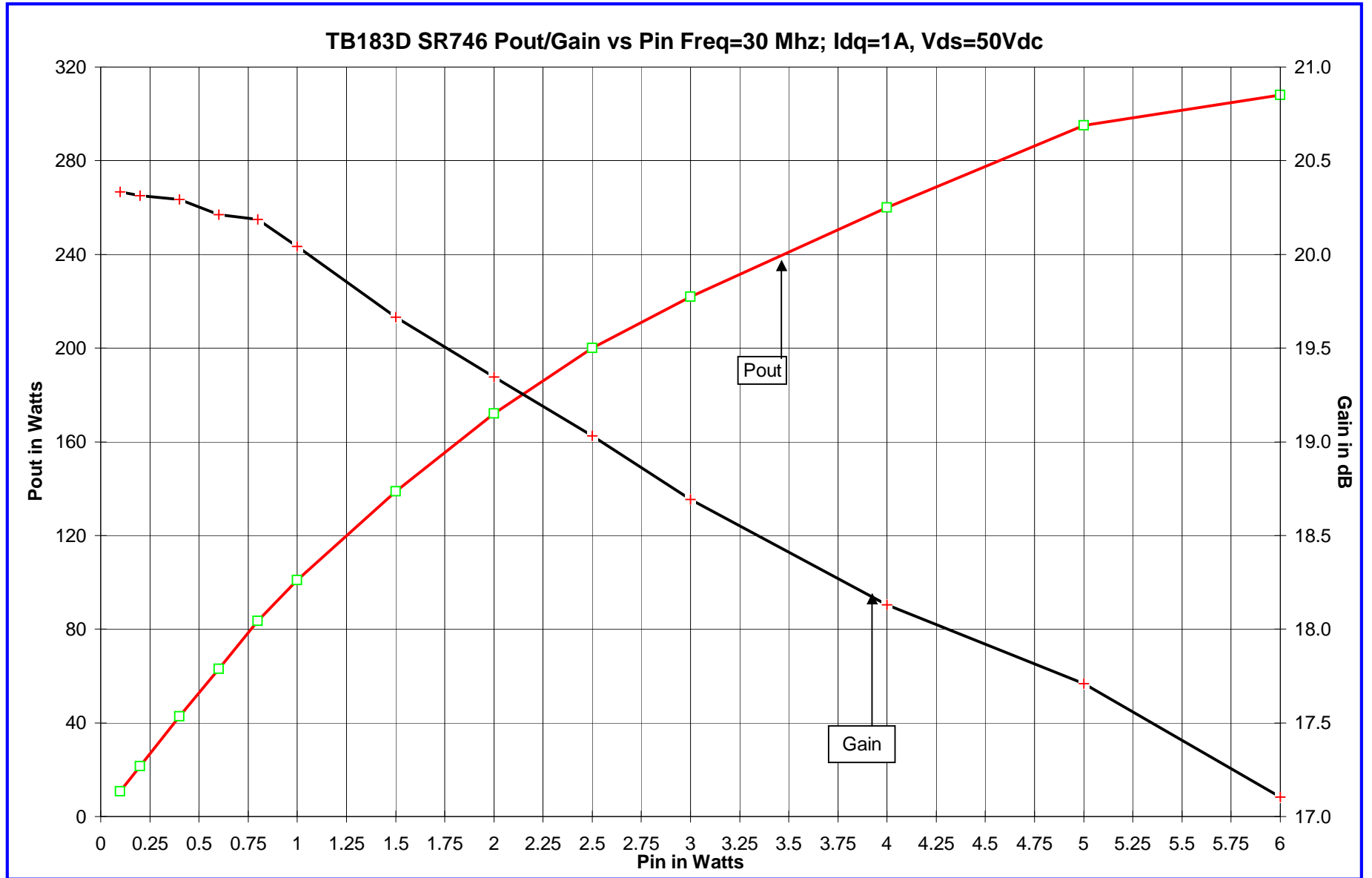
SR746

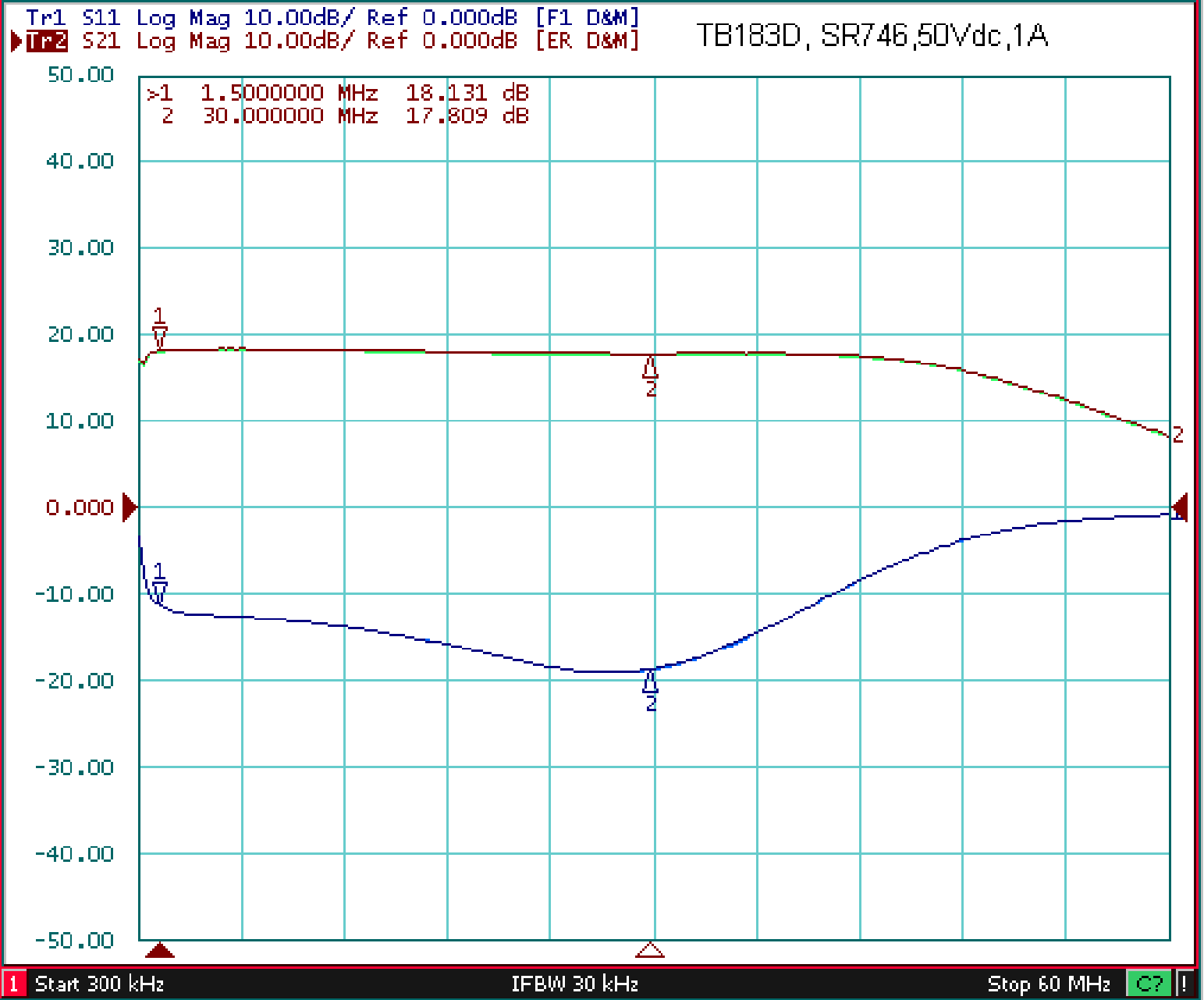


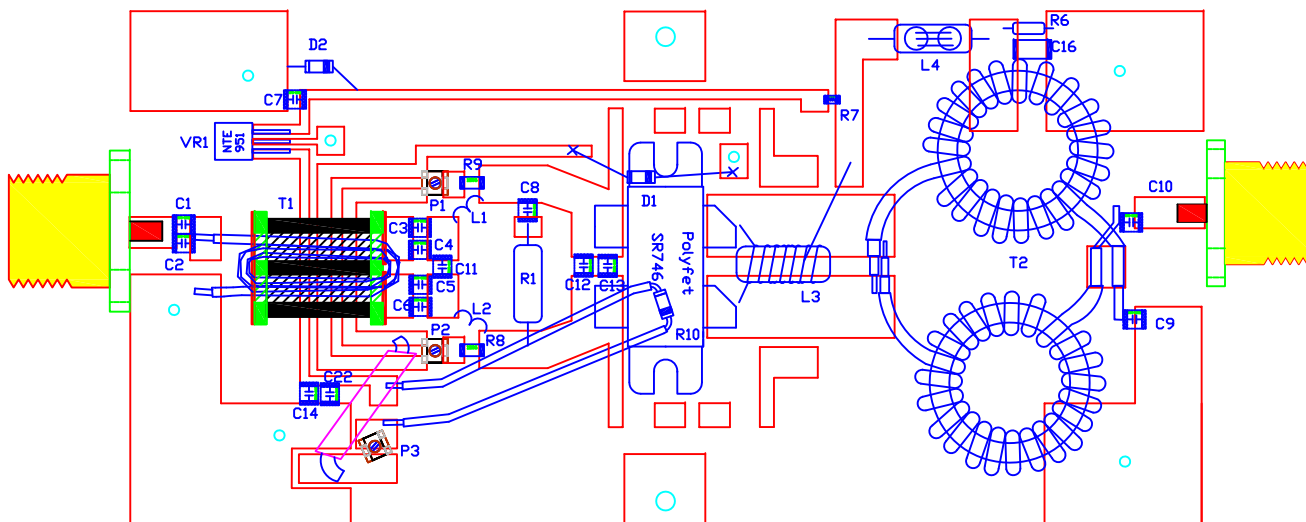












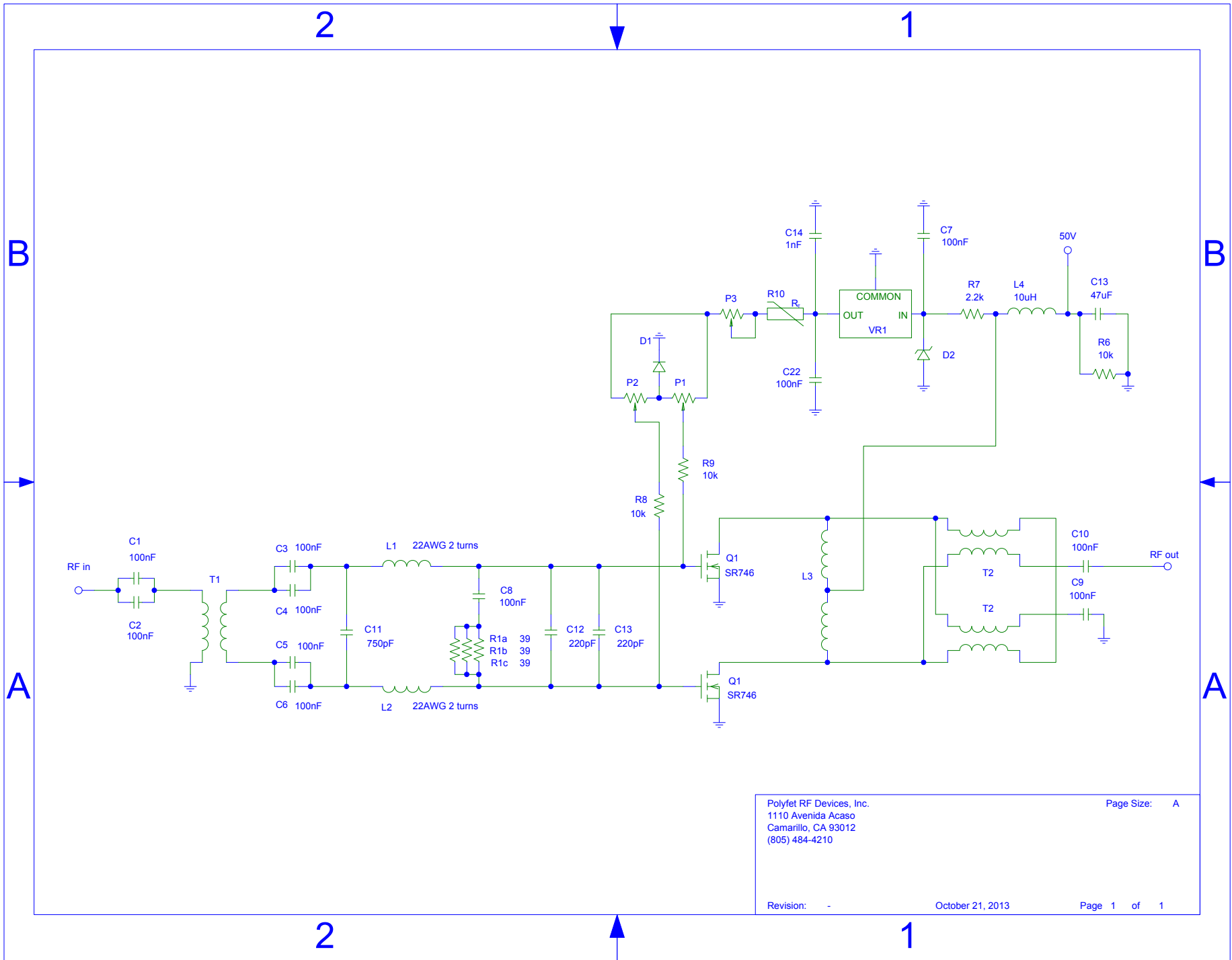
T1: 850mu binocular core
 Amidon BN-43-202
 #24 AWG insulated wire
 4 turns

T2: Amidon AM-130060
 60mu, 20 turns of 21ohm
 Teflon-coax on each core
 Outer conductors tied
 together and floating

C1-8,C22	Passive Plus 100nF 1111X
C11	Passive Plus 750pF 1111N
C12, C13	Passive Plus 220pF 1111N
C14	Passive Plus 1nF 1111N
C16	47uF 50V Tantalum
C9,C10	Passive Plus 100nF 2225
R1	3 of 39 Ohm 2W resistors
R6	10K ohm, 1W
R7	2.2K ohm, 1206
R8-9	10K ohm, 1/4W Chip
R10	KTY83/110 1k thermistor
VR1	78L08 Voltage Regulator
D1	gen. pur. diode
D2	Zener 30V
L1-2	22AWG 2 turns
L3	850mu toroid, 20AWG 17turns
L4	850mu binocular, 20AWG 4turns
P1 & P2	10K multi-turn PDT
P3	500 ohm multi-turn PDT
Q1	SR746, 50Vdc, 1A

PCB is FR4, H=0.064", double-sided 2 oz. copper, Er=3.55

DRN	by E. Cunningham	10/18/13	POLYFET RF DEVICES		
CHKD			TB183D#2, 1.5-30MHz, SR746		
ELECT	E. Cunningham	10/18/13	300W, Vds=50Vdc, Idq=1A		
MECH	E. Cunningham	10/18/13	REV 0		
PRDC			SCALE: pcb 1:1	SHEET 1 OF 1	
QUAL					
PGMS					



Polyfet RF Devices, Inc.
 1110 Avenida Acaso
 Camarillo, CA 93012
 (805) 484-4210

Page Size: A

Revision: -

October 21, 2013

Page 1 of 1