

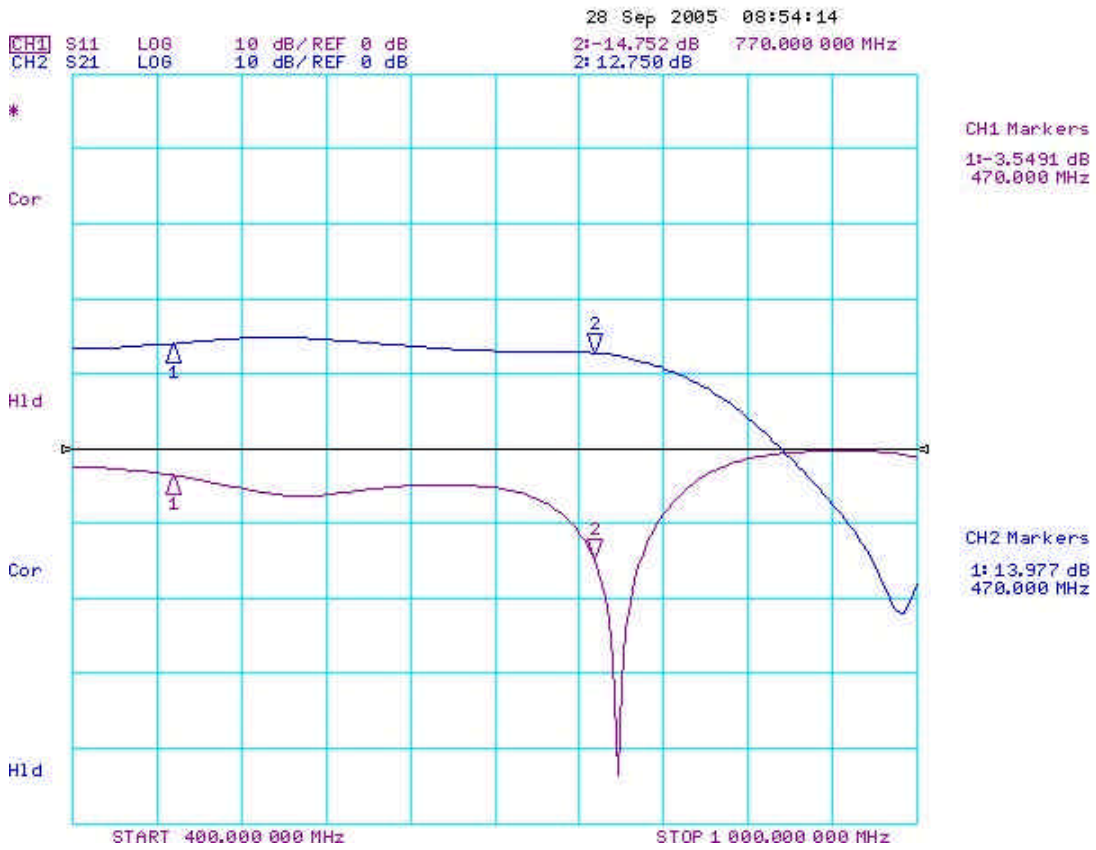
TB204 24V Performance

TB204 LP802		
Vds=24V Idq=0.5A		
Freq (MHz)	Pin (mW)	Pout (mW)
470	4.2	100
490	3.9	100
510	3.5	100
Flatness +/-	0.40	dB
530	3.4	100
550	3.4	100
570	3.5	100
Flatness +/-	0.06	dB
590	3.6	100
610	4	100
630	4	100
Flatness +/-	0.23	dB
650	4.2	100
670	4.2	100
690	4.4	100
Flatness +/-	0.10	dB
710	4.5	100
730	4.5	100
750	4.3	100
770	4.2	100
Flatness +/-	0.15	dB

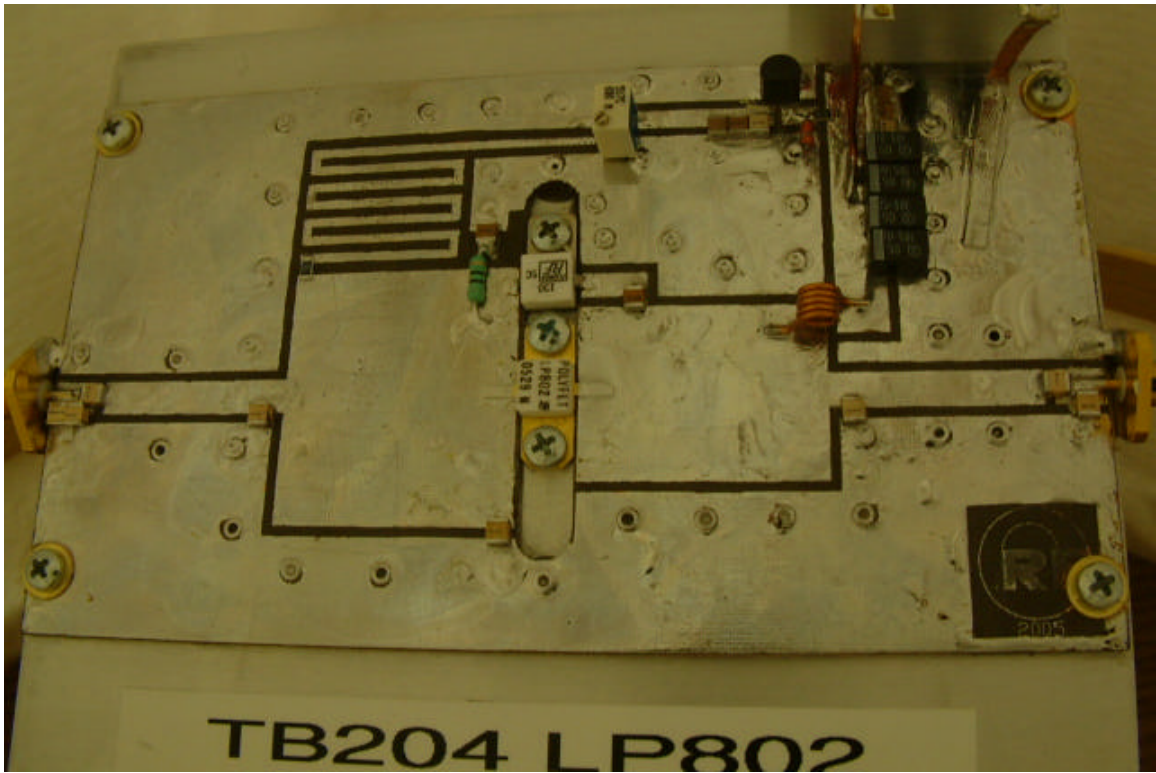
LP802					
Vds=24V					
Idq=1.5A					
F1=470MHz	F2=476MHz				
Pin 1tone	Pout 1tone	Pout 2tones	3rd	5th	PEP
0.4mW	25mW	50mW	<-60	<-60	100mW
2mW	100mW	198mW		-51 <-60	400mW

F1=620MHz	F2=626MHz				
Pin 1tone	Pout 1tone	Pout 2tones	3rd	5th	PEP
0.6mW	25mW	50mW	<-60	<-60	100mW
2.7mW	100mW	200mW		-55 <-60	400mW

F1=764MHz	F2=770MHz				
Pin 1tone	Pout 1tone	Pout 2tones	3rd	5th	PEP
0.8mW	25mW	50mW	<-60	<-60	100mW
3.3mW	100mW	200mW		-54 <-60	400mW



Small-signal of TB204. LP802 $V_{ds}=28V$ $I_{dq}=0.5A$



TB204 LP802